

Anti-E2F2 Rabbit pAb



WL02700

For Research Use Only. Not For Use In Diagnostic Procedures

Product Information

Product name	Anti-E2F2 Rabbit pAb		
Source	Rabbit		
Species reactivity	Human, Mouse, Rat		
Tested applications	WB	1:1000-1:2000	
Pack size	50/100/200/500/1000µl		
Storage	Store at -20°C. Avoid freeze/thaw cycles.		
Storage buffer	Supplied in 20 mM phosphate (pH 7.5), 150 mM NaCl, 100 µg/ml BSA, 50% glycerol and less than 0.02% sodium azide		

General Information

Background

The protein encoded by this gene is a member of the E2F family of transcription factors. Functional inactivation of Rb can be mediated either through mutation or as a consequence of interaction with DNA tumor virus-encoded proteins. The E2F proteins contain several evolutionally conserved domains found in most members of the family. Sequences that are homologous to the E2F binding site have been found upstream of a number of genes that encode proteins with putative functions in the G1 and S phases of the cell cycle. E2F2 exhibits overall 46% amino acid identity to E2F1.

Immunogen

Polyclonal antibody is produced by immunizing animals with a synthetic peptide of E2F2.

Purification

Polyclonal antibody was purified by Protein A affinity chromatography.

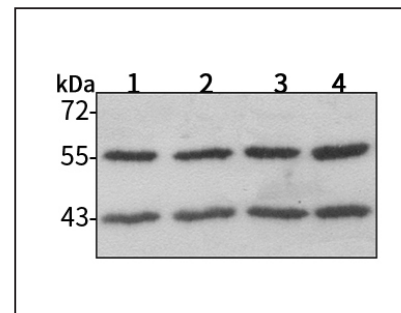
Anti-E2F2 Rabbit pAb



WL02700

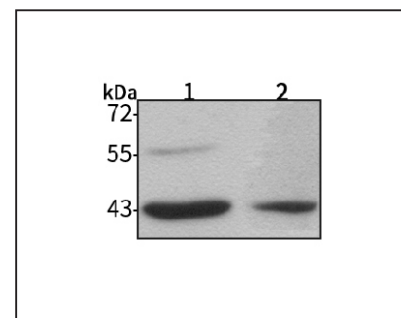
For Research Use Only. Not For Use In Diagnostic Procedures

Product Images



Western blot-Anti-E2F2 pAb

Lane 1: Human HepG2 cell lysate
 Lane 2: Human BGC-823 cell lysate
 Lane 3: Human MGC-803 cell lysate
 Lane 4: Human SGC-7901 cell lysate
 All lanes: Anti-E2F2 at 1:1000 dilution
 Lysates/proteins at 20-50 µg per lane.
 Predicted band size: 47 kDa
 Observed band size: 47 kDa



Western blot-Anti-E2F2 pAb

Lane 1: Mouse stomach tissue lysate
 Lane 2: Rat lung tissue lysate
 All lanes: Anti-E2F2 at 1:1000 dilution
 Lysates/proteins at 20-50 µg per lane.
 Predicted band size: 47 kDa
 Observed band size: 47 kDa