

## Anti-Aggrecan Rabbit pAb



WL02316

For Research Use Only. Not For Use In Diagnostic Procedures

## Product Information

<b>Product name</b>	Anti-Aggrecan Rabbit pAb
<b>Source</b>	Rabbit
<b>Species reactivity</b>	Human, Mouse, Rat
<b>Tested applications</b>	WB 1:1000-1:2000 IHC 1:100 IF 1:500

**Cellular localization** Secreted, extracellular matrix

**Pack size** 50/100/200/500/1000µl

**Storage** Store at -20°C. **Avoid freeze/thaw cycles.**

**Storage buffer** Supplied in 20 mM phosphate (pH 7.5), 150 mM NaCl, 100 µg/ml BSA, 50% glycerol and less than 0.02% sodium azide

## General Information

**Background** Aggrecan is a member of the chondroitin sulphate proteoglycan family, which also includes versican/PG-M, neurocan and brevican. Aggrecan is a complex multidomain macromolecule that undergoes extensive processing and post-translational modification. Aggrecan in cartilage forms aggregates with hyaluronan and link protein, embedded in a collagen network. Aggrecan accounts for the compressive stiffness and resilience of the hyaline cartilage. Many forms of inflammatory arthritis are shown to be accompanied with aggrecan degradation and loss from the cartilage.

**Immunogen** Polyclonal antibody is produced by immunizing animals with a synthetic peptide of Aggrecan.

**Purification** Polyclonal antibody was purified by Protein A affinity chromatography.

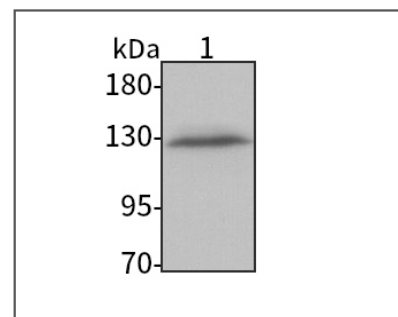
## Anti-Aggrecan Rabbit pAb



WL02316

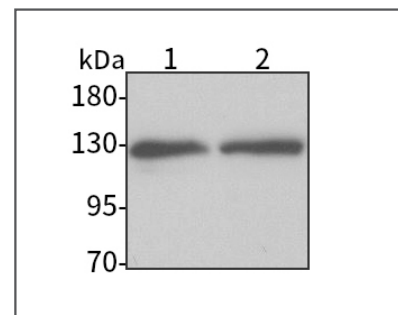
For Research Use Only. Not For Use In Diagnostic Procedures

## Product Images



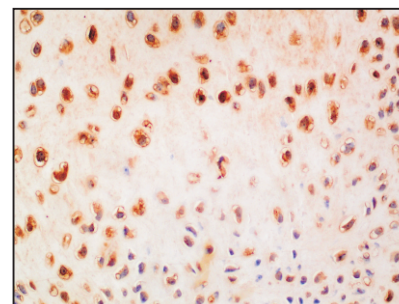
## Western blot-Anti-Aggrecan pAb

**Lane 1:** Human Huh-7 cell lysate  
**All lanes:** Anti-Aggrecan at 1:1000 dilution  
 Lysates/proteins at 20-50 µg per lane.  
 Predicted band size: 250 kDa  
 Observed band size: 50-150 kDa



## Western blot-Anti-Aggrecan pAb

**Lane 1:** Mouse cartilage tissue lysate  
**Lane 2:** Rat cartilage tissue lysate  
**All lanes:** Anti-Aggrecan at 1:1000 dilution  
 Lysates/proteins at 20-50 µg per lane.  
 Predicted band size: 250 kDa  
 Observed band size: 50-150 kDa



## Immunohistochemistry-Anti-Aggrecan pAb

Immunohistochemical analysis of paraffin-embedded mouse cartilage using anti-Aggrecan Rabbit Antibody at 1:100 dilution. Perform heat mediated antigen retrieval with Tris-EDTA buffer pH 9.0

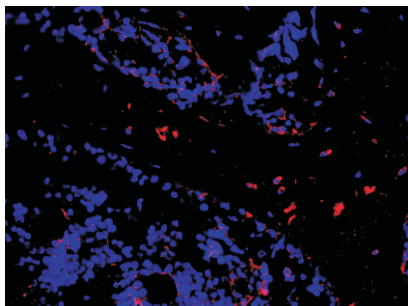
## Anti-Aggrecan Rabbit pAb



WL02316

For Research Use Only. Not For Use In Diagnostic Procedures

### Product Information



#### Immunofluorescence-Anti-Aggrecan pAb

Immunofluorescence analysis of paraffin-embedded mouse femur using anti-Aggrecan Rabbit Antibody at 1:500 dilution.

Perform heat mediated antigen retrieval with Tris-EDTA buffer pH 9.0