

Anti-UQCERS1/RISP Rabbit pAb



WLR0174

For Research Use Only. Not For Use In Diagnostic Procedures

Product Information

Product name	Anti-UQCERS1/RISP Rabbit pAb	
Source	Rabbit	
Species reactivity	Human, Mouse, Rat	
Tested applications	WB	1:1000-1:2000
	IHC, IF	1:100-1:500

Cellular localization Mitochondrion inner membrane.

Pack size 50/100/200/500/1000µl

Storage Store at -20°C. **Avoid freeze/thaw cycles.**

Storage buffer Supplied in 20 mM phosphate (pH 7.5), 150 mM NaCl, 100 µg/ml BSA, 50% glycerol and less than 0.02% sodium azide

General Information

Background Ubiquitin cytochrome c reductase UQCERS1 is a key subunit of cytochrome BC1 complex (complex III) in the mitochondrial respiratory chain, involved in the components of mitochondrial respiratory chain complex III and respiratory electron transport chain. It may participate in the more aggressive breast cancer phenotype. The transport peptide of Rieske protein appears to be part of the BC1 complex and is believed to be subunit 11/IX.

Immunogen Polyclonal antibody is produced by immunizing animals with a synthetic peptide of UQCERS1/RISP.

Purification Polyclonal antibody was purified by Protein A affinity chromatography.

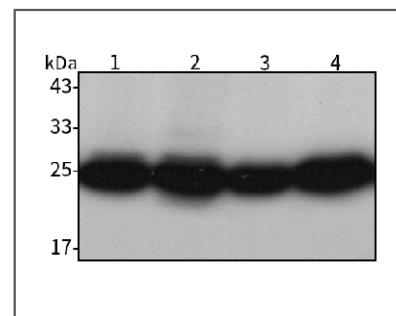
Anti-UQCERS1/RISP Rabbit pAb



WLR0174

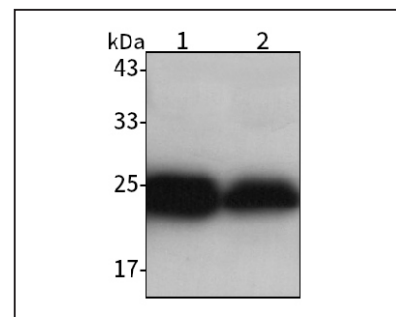
For Research Use Only. Not For Use In Diagnostic Procedures

Product Images



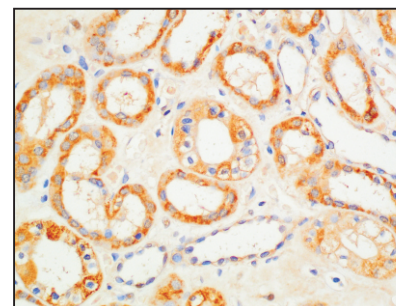
Western blot-Anti-UQCERS1/RISP pAb

Lane 1: Human HEK293 cell lysate
 Lane 2: Human HCT116 cell lysate
 Lane 3: Human MDA-MB-231 cell lysate
 Lane 4: Human A549 cell lysate
 All lanes: Anti-UQCERS1/RISP at 1:1000 dilution
 Lysates/proteins at 20-50 µg per lane.
 Predicted band size: 30 kDa
 Observed band size: 25 kDa



Western blot-Anti-UQCERS1/RISP pAb

Lane 1: Mouse liver tissue lysate
 Lane 2: Rat lung tissue lysate
 All lanes: Anti-UQCERS1/RISP at 1:1000 dilution
 Lysates/proteins at 20-50 µg per lane.
 Predicted band size: 30 kDa
 Observed band size: 25 kDa



Immunohistochemistry-Anti-UQCERS1/RISP pAb

Immunohistochemical analysis of paraffin-embedded human kidney cancer using anti-UQCERS1/RISP Rabbit Antibody at 1:200 dilution. Perform heat mediated antigen retrieval with Tris-EDTA buffer pH 9.0

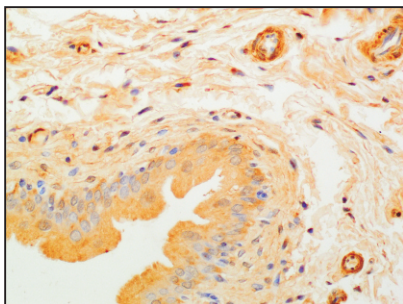
Anti-UQCRFS1/RISP Rabbit pAb



WLR0174

For Research Use Only. Not For Use In Diagnostic Procedures

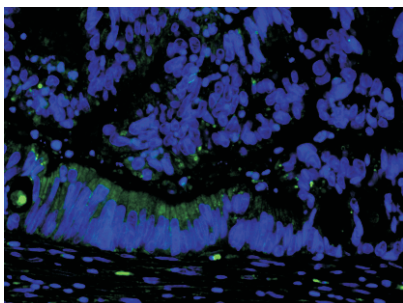
Product Information



Immunohistochemistry-Anti-UQCRFS1/RISP pAb

Immunohistochemical analysis of paraffin-embedded rat bladder using anti-UQCRFS1/RISP Rabbit Antibody at 1:200 dilution.

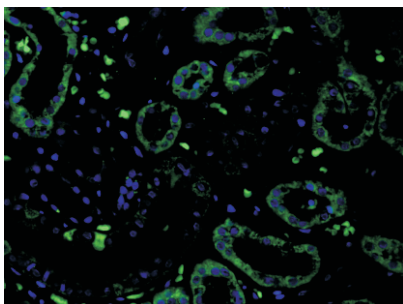
Perform heat mediated antigen retrieval with Tris-EDTA buffer pH 9.0



Immunofluorescence-Anti-UQCRFS1/RISP pAb

Immunofluorescence analysis of paraffin-embedded human colon cancer using anti-UQCRFS1/RISP Rabbit Antibody at 1:200 dilution.

Perform heat mediated antigen retrieval with Tris-EDTA buffer pH 9.0



Immunofluorescence-Anti-UQCRFS1/RISP pAb

Immunofluorescence analysis of paraffin-embedded human kidney cancer using anti-UQCRFS1/RISP Rabbit Antibody at 1:200 dilution.

Perform heat mediated antigen retrieval with Tris-EDTA buffer pH 9.0