

## Anti-CD1a Rabbit pAb



WL04818

For Research Use Only. Not For Use In Diagnostic Procedures

## Product Information

<b>Product name</b>	Anti-CD1a Rabbit pAb		
<b>Source</b>	Rabbit		
<b>Species reactivity</b>	Human, Mouse, Rat		
<b>Tested applications</b>	WB	1:1000-1:2000	
<b>Pack size</b>	50/100/200/500/1000µl		
<b>Storage</b>	Store at -20°C. <b>Avoid freeze/thaw cycles.</b>		
<b>Storage buffer</b>	Supplied in 20 mM phosphate (pH 7.5), 150 mM NaCl, 100 µg/ml BSA, 50% glycerol and less than 0.02% sodium azide		

## General Information

<b>Background</b>	Cd1a is an antigen-presenting protein that binds self and non-self lipid and glycolipid antigens and presents them to T-cell receptors on natural killer T-cells. During protein synthesis and maturation, CD1 family members bind endogenous lipids that are replaced by lipid or glycolipid antigens when the proteins are internalized and pass through endosomes, before trafficking back to the cell surface.
<b>Immunogen</b>	Polyclonal antibody is produced by immunizing animals with a synthetic peptide of Cd1a .
<b>Purification</b>	Polyclonal antibody was purified by Protein A affinity chromatography.

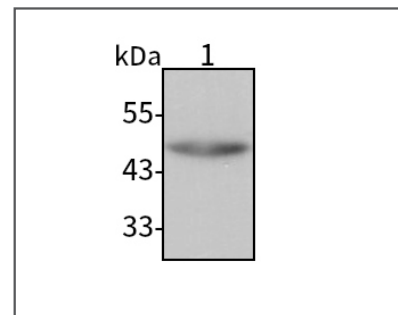
## Anti-CD1a Rabbit pAb



WL04818

For Research Use Only. Not For Use In Diagnostic Procedures

## Product Images



## Western blot-Anti-CD1a pAb

Lane 1: Human Jurkat cell lysate  
 All lanes: Anti-CD1a at 1:1000 dilution  
 Lysates/proteins at 20-50 µg per lane.  
 Predicted band size: 37 kDa  
 Observed band size: 45-50 kDa