

Anti-Albumin Rabbit pAb



WL04835

For Research Use Only. Not For Use In Diagnostic Procedures

Product Information

Product name	Anti-Albumin Rabbit pAb	
Source	Rabbit	
Species reactivity	Human, Mouse, Rat	
Tested applications	WB	1:1000-1:2000
	IF	1:200-1:500
Cellular localization	Secreted.	
Pack size	50/100/200/500/1000μl	
Storage	Store at -20°C. Avoid freeze/thaw cycles.	
Storage buffer	Supplied in 20 mM phosphate (pH 7.5), 150 mM NaCl, 100 μg/ml	
	BSA, 50% glycerol and less than 0.02% sodium azide	

General Information

Background	Albumin is the most abundant protein in blood plasma. Alterations of level of serum albumin are linked to variety of diseases. Albumin is expressed exclusively by well-differentiated hepatocytes, thus anti-albumin has been used to mark hepatocytes.
-------------------	--

Immunogen	Polyclonal antibody is produced by immunizing animals with a synthetic peptide of Albumin.
------------------	--

Purification	Polyclonal antibody was purified by Protein A affinity chromatography.
---------------------	--

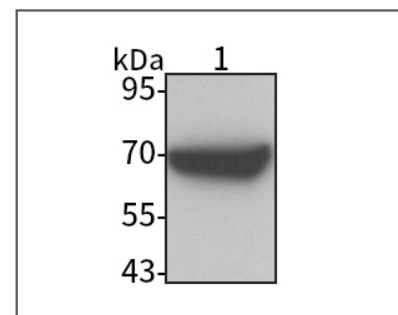
Anti-Albumin Rabbit pAb



WL04835

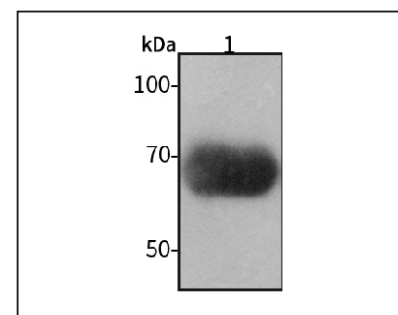
For Research Use Only. Not For Use In Diagnostic Procedures

Product Images



Western blot-Anti-Albumin pAb

Lane 1: Human HEP-G2 cell lysate
 All lanes: Anti-Albumin at 1:1000 dilution
 Lysates/proteins at 20-50 μg per lane.
 Predicted band size: 69 kDa
 Observed band size: 69 kDa



Western blot-Anti-Albumin pAb

Lane 1: Mouse liver tissue lysate
 All lanes: Anti-Albumin at 1:1000 dilution
 Lysates/proteins at 20-50 μg per lane.
 Predicted band size: 69 kDa
 Observed band size: 69 kDa