

Anti-Parathyroid Hormone Rabbit pAb



WL02861

For Research Use Only. Not For Use In Diagnostic Procedures

Product Information

Product name	Anti-Parathyroid Hormone Rabbit pAb		
Source	Rabbit		
Species reactivity	Human, Mouse, Rat		
Tested applications	WB	1:1000-1:2000	
	IF	1:100-1:500	
Pack size	50/100/200/500/1000µl		
Storage	Store at -20°C. Avoid freeze/thaw cycles.		
Storage buffer	Supplied in 20 mM phosphate (pH 7.5), 150 mM NaCl, 100 µg/ml		
	BSA, 50% glycerol and less than 0.02% sodium azide		

General Information

Background	Parathyroid hormone (PTH) is a hormone secreted by the parathyroid glands that is important in bone remodeling, which is an ongoing process in which bone tissue is alternately resorbed and rebuilt over time. It essentially increases blood calcium levels. PTH essentially acts to increase the concentration of calcium in the blood by acting upon the parathyroid hormone 1 receptor, which is present at high levels in bone and kidney, and the parathyroid hormone 2 receptor, which is present at high levels in the central nervous system, pancreas, testis, and placenta. PTH was one of the first hormones to be shown to use the G-protein, adenylyl cyclase second messenger system.
Immunogen	Polyclonal antibody is produced by immunizing animals with a synthetic peptide of Parathyroid Hormone.
Purification	Polyclonal antibody was purified by Protein A affinity chromatography.

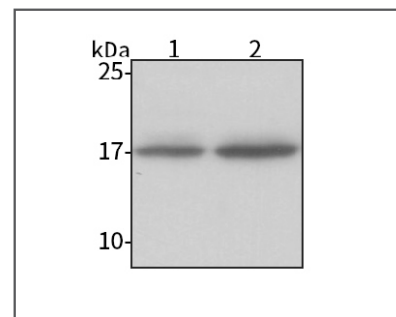
Anti-Parathyroid Hormone Rabbit pAb



WL02861

For Research Use Only. Not For Use In Diagnostic Procedures

Product Images



Western blot-Anti-Parathyroid Hormone pAb

Lane 1: Mouse parathyroid gland tissue lysate

Lane 2: Rat parathyroid gland tissue lysate

All lanes: Anti-Parathyroid Hormone at 1:1000 dilution

Lysates/proteins at 20-50 µg per lane.

Predicted band size: 13 kDa

Observed band size: 17 kDa