

## Anti-ATF2 Rabbit pAb



WL02916

For Research Use Only. Not For Use In Diagnostic Procedures

## Product Information

<b>Product name</b>	Anti-ATF2 Rabbit pAb	
<b>Source</b>	Rabbit	
<b>Species reactivity</b>	Human	
<b>Tested applications</b>	WB	1:1000-1:2000
<b>Pack size</b>	50/100/200/500/1000µl	
<b>Storage</b>	Store at -20°C. <b>Avoid freeze/thaw cycles.</b>	
<b>Storage buffer</b>	Supplied in 20 mM phosphate (pH 7.5), 150 mM NaCl, 100 µg/ml BSA, 50% glycerol and less than 0.02% sodium azide	

## General Information

<b>Background</b>	The transcription factor ATF-2 (also called CRE-BP1) binds to both AP-1 and CRE DNA response elements and is a member of the ATF/CREB family of leucine zipper proteins. ATF-2 is normally activated in response to signals that converge on stress-activated protein kinases p38 and JNK. Various forms of cellular stress, including genotoxic agents, inflammatory cytokines, and UV irradiation, stimulate the transcriptional activity of ATF-2. Phosphorylation of ATF-2 at Thr 69 and Thr 71 by stress-activated kinases is necessary for transcriptional activation. In addition, mutations at these sites reduce the ability of E1A and Rb to stimulate gene expression via ATF-2.
<b>Immunogen</b>	Polyclonal antibody is produced by immunizing animals with a synthetic peptide of ATF2.
<b>Purification</b>	Polyclonal antibody was purified by Protein A affinity chromatography.

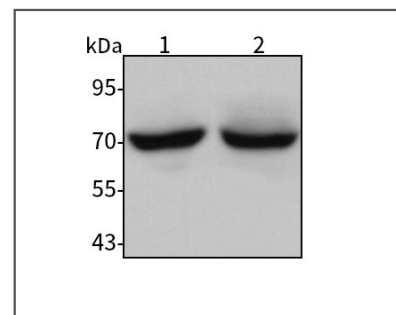
## Anti-ATF2 Rabbit pAb



WL02916

For Research Use Only. Not For Use In Diagnostic Procedures

## Product Images



## Western blot-Anti-ATF2 pAb

Lane 1: Human CAL-27 cell lysate

Lane 2: Human A2780 cell lysate

All lanes: Anti-ATF2 at 1:1000 dilution

Lysates/proteins at 20-50 µg per lane.

Predicted band size: 52 kDa

Observed band size: 70 kDa