

Anti-Choline Acetyltransferase Rabbit pAb



WL04499

For Research Use Only. Not For Use In Diagnostic Procedures

Product Information

Product name	Anti-Choline Acetyltransferase Rabbit pAb	
Source	Rabbit	
Species reactivity	Human, Mouse, Rat	
Tested applications	WB	1:500-1:1000
	IHC	1:100-1:400
Cellular localization	Cytoplasm, nucleus, synapse	
Pack size	50/100/200/500/1000μl	
Storage	Store at -20°C. Avoid freeze/thaw cycles.	
Storage buffer	Supplied in 20 mM phosphate (pH 7.5), 150 mM NaCl, 100 μg/ml	
	BSA, 50% glycerol and less than 0.02% sodium azide	

General Information

Background	CHAT (choline acetyltransferase) belongs to the carnitine/choline acetyltransferase family. Choline O-acetyltransferase (ChAT) catalyzes the synthesis of the neurotransmitter acetylcholine (ACh) from acetyl CoA and choline in the central and peripheral nervous system. CHAT is known to be present exclusively in the cytoplasm of cholinergic neurons and anti-CHAT antibody has been considered as the best marker for cholinergic neurons.
Immunogen	Polyclonal antibody is produced by immunizing animals with a synthetic peptide of Choline Acetyltransferase.
Purification	Polyclonal antibody was purified by immunogen affinity chromatography.

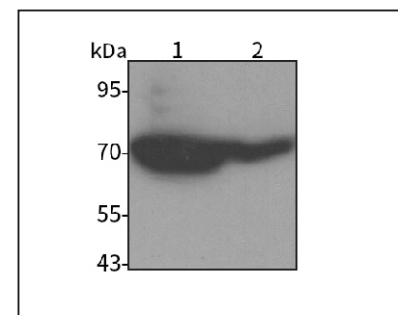
Anti-Choline Acetyltransferase Rabbit pAb



WL04499

For Research Use Only. Not For Use In Diagnostic Procedures

Product Images



Western blot-Anti-Choline Acetyltransferase pAb

Lane 1: Human SH-SY5Y cell lysate

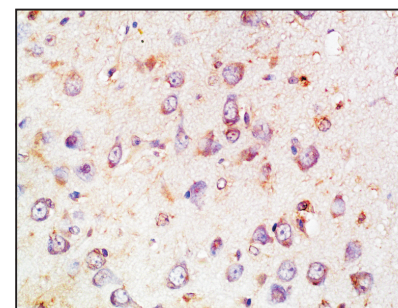
Lane 2: Human HEK-293 cell lysate

All lanes: Anti-Choline Acetyltransferase at 1:1000 dilution

Lysates/proteins at 20-50 μg per lane.

Predicted band size: 82 kDa

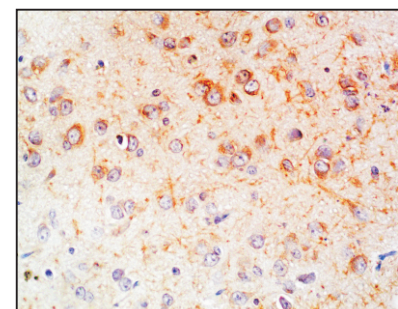
Observed band size: 70 kDa



Immunohistochemistry-Anti-Choline Acetyltransferase pAb

Immunohistochemical analysis of paraffin-embedded mouse brain using anti-Choline Acetyltransferase Rabbit Antibody at 1:200 dilution.

Perform heat mediated antigen retrieval with Tris-EDTA buffer pH 9.0



Immunohistochemistry-Anti-Choline Acetyltransferase pAb

Immunohistochemical analysis of paraffin-embedded rat brain using anti-Choline Acetyltransferase Rabbit Antibody at 1:200 dilution.

Perform heat mediated antigen retrieval with Tris-EDTA buffer pH 9.0