

## Anti-Ghrelin Rabbit pAb



WL03216

For Research Use Only. Not For Use In Diagnostic Procedures

## Product Information

<b>Product name</b>	Anti-Ghrelin Rabbit pAb	
<b>Source</b>	Rabbit	
<b>Species reactivity</b>	Human, Mouse, Rat	
<b>Tested applications</b>	WB	1:500-1:1000
	IHC	1:100-1:400
	IF	1:200
<b>Cellular localization</b>	Secreted	
<b>Pack size</b>	50/100/200/500/1000μl	
<b>Storage</b>	Store at -20°C. <b>Avoid freeze/thaw cycles.</b>	
<b>Storage buffer</b>	Supplied in 20 mM phosphate (pH 7.5), 150 mM NaCl, 100 μg/ml	
	BSA, 50% glycerol and less than 0.02% sodium azide	

## General Information

<b>Background</b>	Ghrelin is a powerful appetite stimulant and plays an important role in energy homeostasis. Its secretion is initiated when the stomach is empty, whereupon it binds to the growth hormone secretagogue receptor in the hypothalamus which results in the secretion of growth hormone (somatotropin). Ghrelin is an endogenous ligand for the growth hormone secretagogue receptor (GHS-R). The acylated peptide of ghrelin specifically releases GH both in vivo and in vitro and is found in stomach tissue. GH plays a crucial role in stimulating and controlling the growth, metabolism and differentiation of many mammalian cell types by modulating the synthesis of multiple mRNA species.
<b>Immunogen</b>	Polyclonal antibody is produced by immunizing animals with a synthetic peptide of Ghrelin.
<b>Purification</b>	Polyclonal antibody was purified by immunogen affinity chromatography.

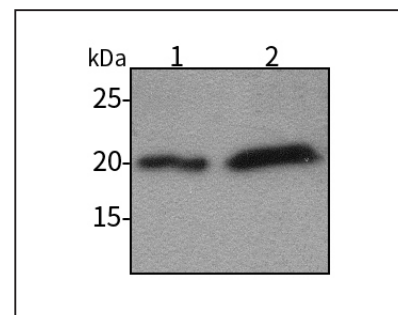
## Anti-Ghrelin Rabbit pAb



WL03216

For Research Use Only. Not For Use In Diagnostic Procedures

## Product Images



## Western blot-Anti-Ghrelin pAb

Lane 1: Mouse duodenum tissue lysate

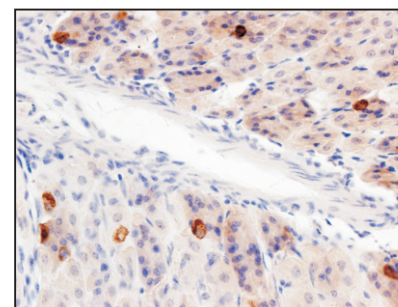
Lane 2: Rat stomach tissue lysate

All lanes: Anti-Ghrelin at 1:1000 dilution

Lysates/proteins at 20-50 μg per lane.

Predicted band size: 13 kDa

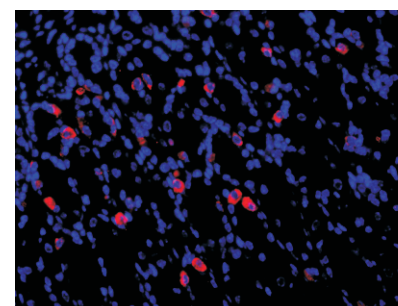
Observed band size: 20 kDa



## Immunohistochemistry-Anti-Ghrelin pAb

Immunohistochemical analysis of paraffin-embedded mouse stomach using anti-Ghrelin Rabbit Antibody at 1:300 dilution.

Perform heat mediated antigen retrieval with Tris-EDTA buffer pH 9.0



## Immunofluorescence-Anti-Ghrelin pAb

Immunofluorescence analysis of paraffin-embedded mouse stomach using anti-Ghrelin Rabbit Antibody at 1:200 dilution.

Perform heat mediated antigen retrieval with Tris-EDTA buffer pH 9.0