

Anti-Growth Hormone Rabbit pAb



WLA0255

For Research Use Only. Not For Use In Diagnostic Procedures

Product Information

Product name Anti-Growth Hormone Rabbit pAb

Source Rabbit

Species reactivity Human, Mouse, Rat

Tested applications

WB	1:500-1:1000
IHC, IF	1:100-1:200

Cellular localization Secreted.

Pack size 50/100/200/500/1000μl

Storage Store at -20°C. **Avoid freeze/thaw cycles.**

Storage buffer Supplied in 20 mM phosphate (pH 7.5), 150 mM NaCl, 100 μg/ml BSA, 50% glycerol and less than 0.02% sodium azide

General Information

Background Gh1, Also known as GH and GH-N, they are members of the growth hormone/prolactin family of hormones and play an important role in growth control. Its main role in stimulating human growth is to stimulate the secretion of IGF-1 by the liver and other tissues. It stimulates the differentiation and proliferation of muscle cells. It also stimulates amino acid uptake and protein synthesis in muscles and other tissues.

Immunogen Polyclonal antibody is produced by immunizing animals with a synthetic peptide of Growth Hormone.

Purification Polyclonal antibody was purified by immunogen affinity chromatography.

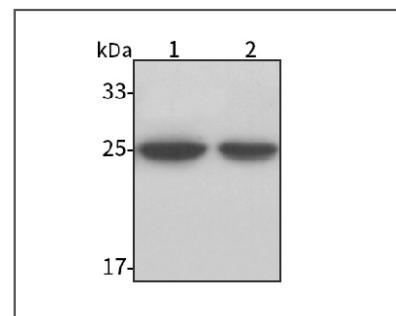
Anti-Growth Hormone Rabbit pAb



WLA0255

For Research Use Only. Not For Use In Diagnostic Procedures

Product Images



Western blot-Anti-Growth Hormone pAb

Lane 1: Mouse placenta tissue lysate

Lane 2: Rat placenta tissue lysate

All lanes: Anti-Growth Hormone at 1:1000 dilution

Lysates/proteins at 20-50 μg per lane

Predicted band size: 25 kDa

Observed band size: 25 kDa