

Anti-KAT2B/PCAF Rabbit pAb



WL04515

For Research Use Only. Not For Use In Diagnostic Procedures

Product Information

Product name	Anti-KAT2B/PCAF Rabbit pAb	
Source	Rabbit	
Species reactivity	Human, Mouse, Rat	
Tested applications	WB	1:1000-1:2000
	IHC, IF	1:500
Cellular localization	Cytoplasm. Nucleus.	
Pack size	50/100/200/500/1000μl	
Storage	Store at -20°C. Avoid freeze/thaw cycles.	
Storage buffer	Supplied in 20 mM phosphate (pH 7.5), 150 mM NaCl, 100 μg/ml	
	BSA, 50% glycerol and less than 0.02% sodium azide	

General Information

Background	CBP and p300 are large nuclear proteins that bind to many sequence-specific factors involved in cell growth and/or differentiation, including c-jun and the adenoviral oncoprotein E1A. PCAF exerts histone acetyltransferase activity in association with core histones (H3 and H4) and with nucleosome core particles, and functions to promote transcriptional activation. It has histone acetyl transferase activity with core histones and nucleosome core particles, indicating that this protein plays a direct role in transcriptional regulation.
Immunogen	Polyclonal antibody is produced by immunizing animals with a synthetic peptide of KAT2B/PCAF.
Purification	Polyclonal antibody was purified by Protein A affinity chromatography.

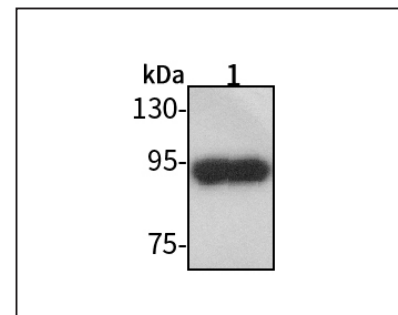
Anti-KAT2B/PCAF Rabbit pAb



WL04515

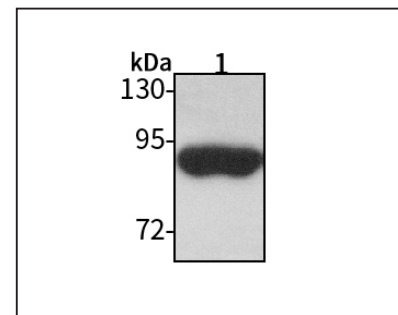
For Research Use Only. Not For Use In Diagnostic Procedures

Product Images



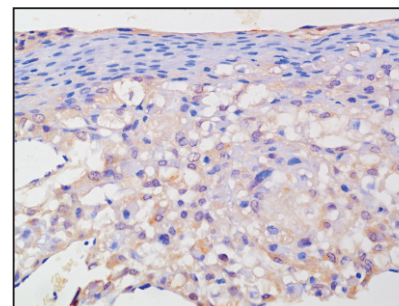
Western blot-Anti-KAT2B/PCAF pAb

Lane 1: Human A549 cell lysate 30μg
 All lanes: Anti-KAT2B/PCAF at 1:1000 dilution
 Lysates/proteins at 20-50 μg per lane
 Predicted band size: 93 kDa
 Observed band size: 93 kDa



Western blot-Anti-KAT2B/PCAF pAb

Lane 1: Rat colon tissue lysate 30μg
 All lanes: Anti-KAT2B/PCAF at 1:1000 dilution
 Lysates/proteins at 20-50 μg per lane
 Predicted band size: 93 kDa
 Observed band size: 93 kDa



Immunohistochemistry-Anti-KAT2B/PCAF pAb

Immunohistochemical analysis of paraffin-embedded mouse placenta using anti-KAT2B/PCAF Rabbit Antibody at 1:500 dilution.
 Perform heat mediated antigen retrieval with Tris-EDTA buffer pH 9.0

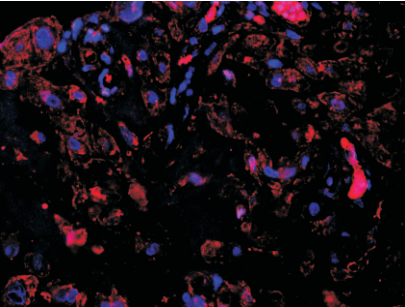
Anti-KAT2B/PCAF Rabbit pAb



WL04515

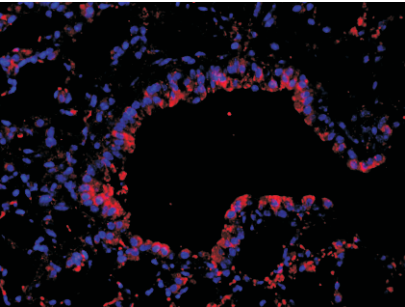
For Research Use Only. Not For Use In Diagnostic Procedures

Product Information



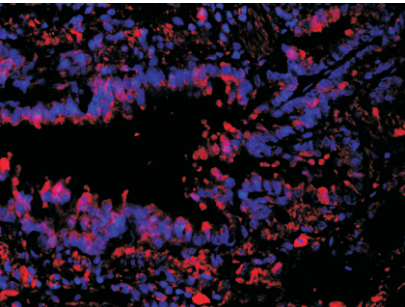
Immunofluorescence-Anti-KAT2B/PCAF pAb

Immunofluorescence analysis of paraffin-embedded human placenta using anti-KAT2B/PCAF Rabbit Antibody at 1:500 dilution.
Perform heat mediated antigen retrieval with Tris-EDTA buffer pH 9.0



Immunofluorescence-Anti-KAT2B/PCAF pAb

Immunofluorescence analysis of paraffin-embedded mouse lung using anti-KAT2B/PCAF Rabbit Antibody at 1:500 dilution.
Perform heat mediated antigen retrieval with Tris-EDTA buffer pH 9.0



Immunofluorescence-Anti-KAT2B/PCAF pAb

Immunofluorescence analysis of paraffin-embedded rat lung using anti-KAT2B/PCAF Rabbit Antibody at 1:500 dilution.
Perform heat mediated antigen retrieval with Tris-EDTA buffer pH 9.0

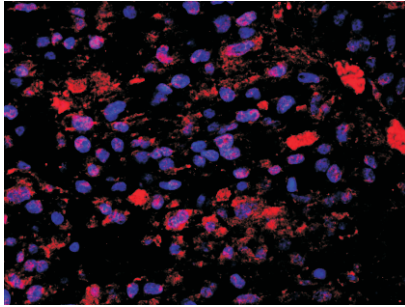
Anti-KAT2B/PCAF Rabbit pAb



WL04515

For Research Use Only. Not For Use In Diagnostic Procedures

Product Information



Immunofluorescence-Anti-KAT2B/PCAF pAb

Immunofluorescence analysis of paraffin-embedded rat placenta using anti-KAT2B/PCAF Rabbit Antibody at 1:500 dilution.
Perform heat mediated antigen retrieval with Tris-EDTA buffer pH 9.0