

## Anti- IFITM2 Rabbit pAb



WLR0163

For Research Use Only. Not For Use In Diagnostic Procedures

## Product Information

<b>Product name</b>	Anti- IFITM2 Rabbit pAb	
<b>Source</b>	Rabbit	
<b>Species reactivity</b>	Human, Mouse, Rat	
<b>Tested applications</b>	WB	1:1000-1:2000
	IHC, IF	1:100-1:500
<b>Cellular localization</b>	Membrane. Lysosome.	
<b>Pack size</b>	50/100/200/500/1000µl	
<b>Storage</b>	Store at -20°C. <b>Avoid freeze/thaw cycles.</b>	
<b>Storage buffer</b>	Supplied in 20 mM phosphate (pH 7.5), 150 mM NaCl, 100 µg/ml	
	BSA, 50% glycerol and less than 0.02% sodium azide	

## General Information

<b>Background</b>	IFITM2 (also known as 1-8D) belongs to the CD225 family. This is an IFN induced antiviral protein that can inhibit virus entry into the host cytoplasm, allowing endocytosis but preventing subsequent virus fusion and release of viral contents into the cytoplasm. IFITM2 can induce cell cycle arrest and mediate apoptosis through caspase activation and p53 independent mechanisms. IFITM2 is a novel apoptotic gene that will provide new insights into regulated cell death pathways. IFITM2 and IFITM3 exhibit anti HCV activity, possibly by capturing viral particles in the endocytic pathway and targeting their degradation in lysosomes, in a coordinated manner to inhibit the later stages of HCV entry, thereby supplementing IFITM1's anti HCV activity.
<b>Immunogen</b>	Polyclonal antibody is produced by immunizing animals with a synthetic peptide of IFITM2.
<b>Purification</b>	Polyclonal antibody was purified by Protein A affinity chromatography.

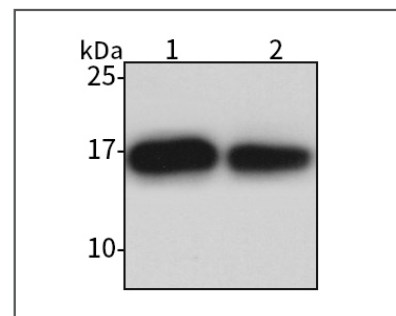
## Anti- IFITM2 Rabbit pAb



WLR0163

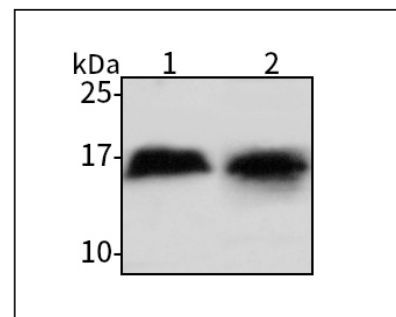
For Research Use Only. Not For Use In Diagnostic Procedures

## Product Images



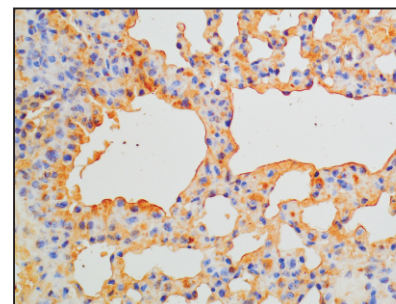
## Western blot-Anti- IFITM2 pAb

Lane 1: Human MCF7 cell lysate  
 Lane 2: Human A549 cell lysate  
 All lanes: Anti- IFITM2 at 1:1000 dilution  
 Lysates/proteins at 20-50 µg per lane.  
 Predicted band size: 15 kDa  
 Observed band size: 17 kDa



## Western blot-Anti- IFITM2 pAb

Lane 1: Mouse spleen tissue lysate  
 Lane 2: Rat spleen tissue lysate  
 All lanes: Anti-IFITM2 at 1:1000 dilution  
 Lysates/proteins at 20-50 µg per lane.  
 Predicted band size: 15 kDa  
 Observed band size: 17 kDa



## Immunohistochemistry-Anti- IFITM2 pAb

Immunohistochemical analysis of paraffin-embedded mouse lung using anti- IFITM2 Rabbit Antibody at 1:200 dilution.  
 Perform heat mediated antigen retrieval with Tris-EDTA buffer pH 9.0

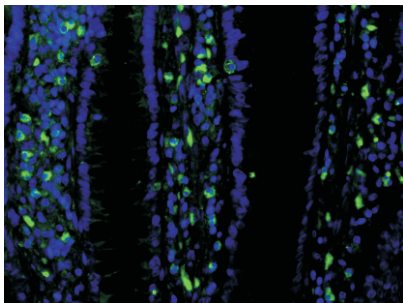


## Anti- IFITM2 Rabbit pAb

WLR0163

For Research Use Only. Not For Use In Diagnostic Procedures

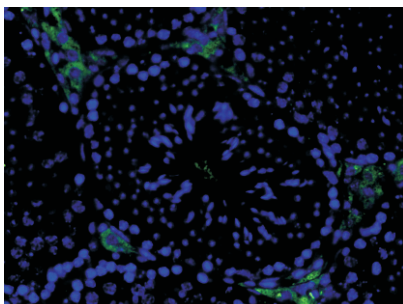
### Product Information



#### Immunofluorescence-Anti- IFITM2 pAb

Immunofluorescence analysis of paraffin-embedded human colon cancer using anti- IFITM2 Rabbit Antibody at 1:200 dilution.

Perform heat mediated antigen retrieval with Tris-EDTA buffer pH 9.0



#### Immunofluorescence-Anti- IFITM2 pAb

Immunofluorescence analysis of paraffin-embedded mouse testis using anti- IFITM2 Rabbit Antibody at 1:200 dilution.

Perform heat mediated antigen retrieval with Tris-EDTA buffer pH 9.0