

## Anti-MAG/GMA Rabbit pAb



WL04896

For Research Use Only. Not For Use In Diagnostic Procedures

## Product Information

Product name	Anti-MAG/GMA Rabbit pAb		
Source	Rabbit		
Species reactivity	Human, Mouse, Rat		
Tested applications	WB	1:500-1:1000	
Pack size	50/100/200/500/1000μl		
Storage	Store at -20°C. <b>Avoid freeze/thaw cycles.</b>		
Storage buffer	Supplied in 20 mM phosphate (pH 7.5), 150 mM NaCl, 100 μg/ml BSA, 50% glycerol and less than 0.02% sodium azide		

## General Information

Background	MAG is a type I membrane protein and member of the immunoglobulin superfamily. It is thought to be involved in the process of myelination. It is a lectin that binds to sialylated glycoconjugates and mediates certain myelin-neuron cell-cell interactions.
------------	---

Immunogen	Polyclonal antibody is produced by immunizing animals with a synthetic peptide of MAG/GMA.
-----------	--

Purification	Polyclonal antibody was purified by immunogen affinity chromatography.
--------------	--

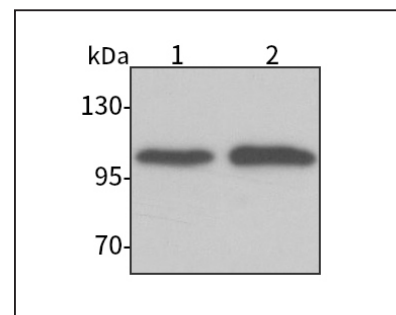
## Anti-MAG/GMA Rabbit pAb



WL04896

For Research Use Only. Not For Use In Diagnostic Procedures

## Product Images



## Western blot-Anti-MAG/GMA pAb

Lane 1: Mouse brain tissue lysate

Lane 2: Rat brain tissue lysate

All lanes: Anti-MAG/GMA at 1:1000 dilution

Lysates/proteins at 20-50 μg per lane.

Predicted band size: 69 kDa

Observed band size: 100 kDa