

Anti-Chd1 Rabbit pAb



WL03547

For Research Use Only. Not For Use In Diagnostic Procedures

Product Information

Product name	Anti-Chd1 Rabbit pAb	
Source	Rabbit	
Species reactivity	Human	
Tested applications	WB	1:1000-1:2000
Pack size	50/100/200/500/1000μl	
Storage	Store at -20°C. Avoid freeze/thaw cycles.	
Storage buffer	Supplied in 20 mM phosphate (pH 7.5), 150 mM NaCl, 100 μg/ml BSA, 50% glycerol and less than 0.02% sodium azide	

General Information

Background	The characteristic of the CHD protein family is the presence of chromatin (chromatin tissue modifier) domains and SNF2 related helicase/ATPase domains. CHD1 is an ATP dependent chromatin remodeling factor that serves as a substrate recognition component for the transcriptional regulatory histone acetylation (HAT) complex SAGA. CHD1 regulates the transcription of polymerase II, which is necessary for the effective transcription of RNA polymerase I. More specifically, it is the polymerase I transcription termination step and can negatively regulate DNA replication. CHD1 is required for bridging SNF2, FACT complex, PAF complex, and U2 snRNP complex to H3K4me3.
Immunogen	Polyclonal antibody is produced by immunizing animals with a synthetic peptide of Chd1.
Purification	Polyclonal antibody was purified by Protein A affinity chromatography.

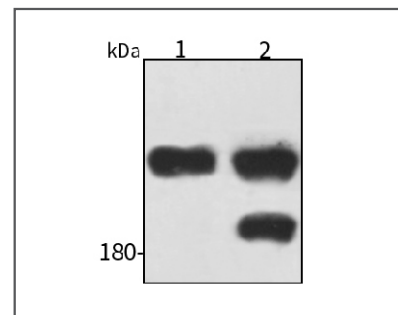
Anti-Chd1 Rabbit pAb



WL03547

For Research Use Only. Not For Use In Diagnostic Procedures

Product Images



Western blot-Anti-Chd1 pAb

Lane 1: Human HeLa cell lysate

Lane 2: Human HEK293 cell lysate

All lanes: Anti-Chd1 at 1:1000 dilution

Lysates/proteins at 20-50 μg per lane

Predicted band size: 197 kDa

Observed band size: 250 kDa