

Anti-SNCA Rabbit pAb



WL05015

For Research Use Only. Not For Use In Diagnostic Procedures

Product Information

Product name	Anti-SNCA Rabbit pAb	
Source	Rabbit	
Species reactivity	Human, Mouse, Rat	
Tested applications	WB	1:500-1:1000
	IHC, IF	1:100-1:200
Cellular localization	Cytoplasm. Membrane. Nucleus. Cell junction, synapse. Secreted.	
Pack size	50/100/200/500/1000μl	
Storage	Store at -20°C. Avoid freeze/thaw cycles.	
Storage buffer	Supplied in 20 mM phosphate (pH 7.5), 150 mM NaCl, 100 μg/ml	
	BSA, 50% glycerol and less than 0.02% sodium azide	

General Information

Background	Alpha-synuclein is a member of the synuclein family. The synuclein family members, including α-synuclein and β-synuclein, are predominantly expressed in the brain where they influence synaptic regulation and neuronal plasticity. Hyper-phosphorylated forms of α-syn protein are the pathological hallmark of Lewy body disease, which includes Parkinson's disease (PD), diffuse Lewy body disease (DLBD), and Lewy body variant of Alzheimer's disease (LBV).
Immunogen	Polyclonal antibody is produced by immunizing animals with a synthetic peptide of SNCA.
Purification	Polyclonal antibody was purified by immunogen affinity chromatography.

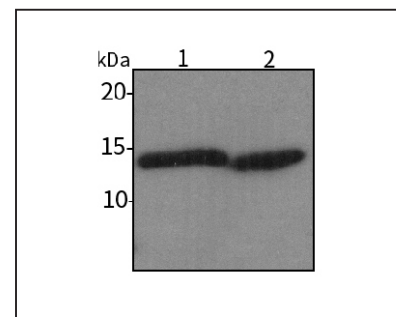
Anti-SNCA Rabbit pAb



WL05015

For Research Use Only. Not For Use In Diagnostic Procedures

Product Images



Western blot-Anti-SNCA pAb

Lane 1: Mouse brain tissue lysate

Lane 2: Rat brain tissue lysate

All lanes: Anti-SNCA at 1:1000 dilution

Lysates/proteins at 20-50 μg per lane.

Predicted band size: 14 kDa

Observed band size: 14 kDa