

Anti-P2X2 Rabbit pAb



WL05182

For Research Use Only. Not For Use In Diagnostic Procedures

Product Information

Product name	Anti-P2X2 Rabbit pAb
Source	Rabbit
Species reactivity	Human, Mouse, Rat
Tested applications	Western blot 1:500-1:1000
	<i>*Suggested working dilutions are given as a guide only. It is recommended that the user titrates the product for use in their own experiment using appropriate negative and positive controls.</i>
Molecular Wt.	52 kDa 50/100/200/500/1000μl
Pack size	Store at -20°C. Avoid freeze/thaw cycles.
Storage	Supplied in 20 mM phosphate (pH 7.5), 150 mM NaCl, 100 μg/ml BSA, 50% glycerol and less than 0.02% sodium azide
Storage buffer	

General Information

Background	P2X2 this gene belongs to the family of purinoceptors for ATP. This receptor functions as a ligand-gated ion channel. Binding to ATP mediates synaptic transmission between neurons and from neurons to smooth muscle. Multiple transcript variants encoding distinct isoforms have been identified for this gene
-------------------	---

Immunogen	Polyclonal antibody is produced by immunizing animals with a synthetic peptide of P2X2.
------------------	---

Purification	Polyclonal antibody was purified by immunogen affinity chromatography.
---------------------	--

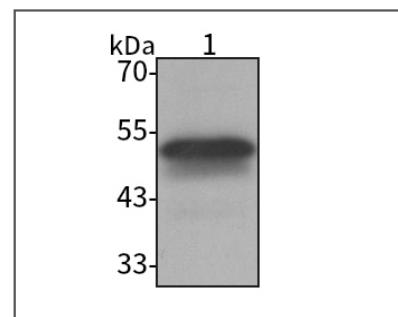
Anti-P2X2 Rabbit pAb



WL05182

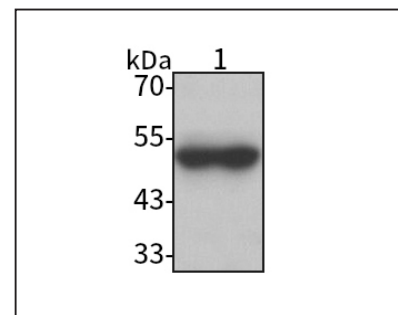
For Research Use Only. Not For Use In Diagnostic Procedures

Product Images



Western blot-Anti-P2X2 pAb

Lane 1: Human HEP-G2 cell lysate 20μg
 Separation gel: 10% polyacrylamide
 Electrophoresis: 100V, 4°C, 3h
 Transmembrane: 100V, 4°C, 1h
 Blocking: 5% w/v nonfat dry milk, 1 × TBST, at RT with gentle shaking
 Primary antibody: 1:1000 in blocking buffer, 4°C, overnight
 Secondary antibody (WLA023a) : 1:5000-1:10000, 45min
 Detection: ECL, 30s-2min



Western blot-Anti-P2X2 pAb

Lane 1: Rat brain tissue lysate 10μg
 Separation gel: 10% polyacrylamide
 Electrophoresis: 100V, 4°C, 3h
 Transmembrane: 100V, 4°C, 1h
 Blocking: 5% w/v nonfat dry milk, 1 × TBST, at RT with gentle shaking
 Primary antibody: 1:1000 in blocking buffer, 4°C, overnight
 Secondary antibody (WLA023a) : 1:5000-1:10000, 45min
 Detection: ECL, 30s-2min