

Anti-Chymotrypsin Rabbit pAb



WL04304

For Research Use Only. Not For Use In Diagnostic Procedures

Product Information

Product name	Anti-Chymotrypsin Rabbit pAb	
Source	Rabbit	
Species reactivity	Human, Mouse, Rat	
Tested applications	WB	1:1000-1:2000
	IHC	1:200-1:500
Cellular localization	Cytoplasm.	
Pack size	50/100/200/500/1000µl	
Storage	Store at -20°C. Avoid freeze/thaw cycles.	
Storage buffer	Supplied in 20 mM phosphate (pH 7.5), 150 mM NaCl, 100 µg/ml	
	BSA, 50% glycerol and less than 0.02% sodium azide	

General Information

Background	This gene encodes a member of the peptidase S1 family. The encoded protein is a serum calcium-decreasing factor that has chymotrypsin-like protease activity. Chymotrypsin is a digestive enzyme that can perform proteolysis by cleaving peptides at the carboxyl side of tyrosine, tryptophan and phenylalanine, although over time it also hydrolyzes other amide bonds, especially those with leucine-donated carboxyls. Chymotrypsin is synthesized in the pancreas by protein biosynthesis as a precursor called chymotrypsinogen that is enzymatically inactive, but becomes active as a three polypeptide molecule that is interconnected by disulfide bonds.
Immunogen	Polyclonal antibody is produced by immunizing animals with a synthetic peptide of Chymotrypsin.
Purification	Polyclonal antibody was purified by Protein A affinity chromatography.

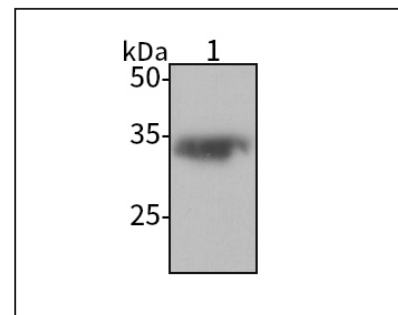
Anti-Chymotrypsin Rabbit pAb



WL04304

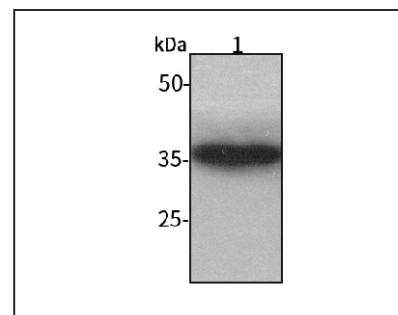
For Research Use Only. Not For Use In Diagnostic Procedures

Product Images



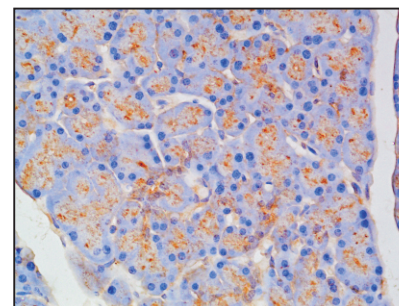
Western blot-Anti-Chymotrypsin pAb

Lane 1: Human BxPC-3 cell lysate
All lanes: Anti-Chymotrypsin at 1:1000 dilution
 Lysates/proteins at 20-50 µg per lane.
 Predicted band size: 34 kDa
 Observed band size: 34 kDa



Western blot-Anti-Chymotrypsin pAb

Lane 1: Mouse pancreas tissue lysate
All lanes: Anti-Chymotrypsin at 1:1000 dilution
 Lysates/proteins at 20-50 µg per lane.
 Predicted band size: 34 kDa
 Observed band size: 34 kDa



Immunohistochemistry-Anti-Chymotrypsin pAb

Immunohistochemical analysis of paraffin-embedded rat pancreas using anti-Chymotrypsin Rabbit Antibody at 1:200 dilution.
 Perform heat mediated antigen retrieval with Tris-EDTA buffer pH 9.0