

Anti- Smad1 Rabbit pAb



WL05256

For Research Use Only. Not For Use In Diagnostic Procedures

Product Information

Product name	Anti- Smad1 Rabbit pAb	
Source	Rabbit	
Species reactivity	Human, Rat	
Tested applications	WB	1:1000-1:2000
	IHC	1:100-1:500
Cellular localization	Cytoplasm. Nucleus.	
Pack size	50/100/200/500/1000μl	
Storage	Store at -20°C. Avoid freeze/thaw cycles.	
Storage buffer	Supplied in 20 mM phosphate (pH 7.5), 150 mM NaCl, 100 μg/ml	
	BSA, 50% glycerol and less than 0.02% sodium azide	

General Information

Background	Smad1 belongs to the Smad family, which is a protein family of gene products similar to Drosophila genes, such as "Mother Against Peeling" (MAD) and the Caenorhabditis elegans gene SMA. One of the most important proteins regulating TGF-β ligand activity is the SMAD family of proteins. SMAD1 is one of the receptor activated Smads. It is also a signal transducer for BMP signaling and binds to several proteins involved in the ubiquitin proteasome system (UPS). It mediates the signaling of bone morphogenetic protein (BMP), which is involved in a range of biological activities including cell growth, apoptosis, morphogenesis, development, and immune response. In response to BMP ligands, Smad1 can be phosphorylated and activated by BMP receptor kinase. Its phosphorylated form forms a complex with Smad4, which is important for its function in transcriptional regulation.
Immunogen	Polyclonal antibody is produced by immunizing animals with a synthetic peptide of Smad1.
Purification	Polyclonal antibody was purified by Protein A affinity chromatography.

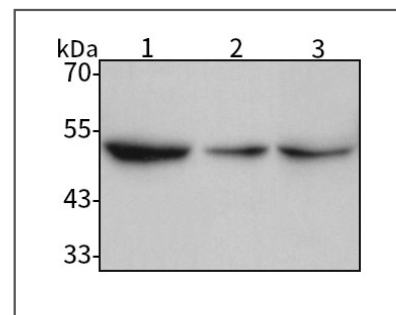
Anti- Smad1 Rabbit pAb



WL05256

For Research Use Only. Not For Use In Diagnostic Procedures

Product Images



Western blot-Anti- Smad1 pAb

Lane 1: Human HeLa cell lysate

Lane 2: Human HEP-G2 cell lysate

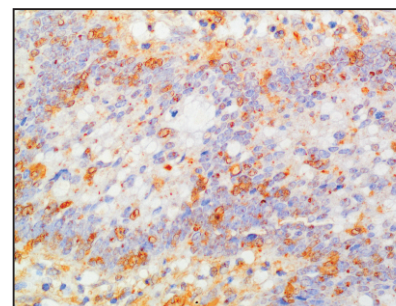
Lane 3: Human A549 cell lysate

All lanes: Anti- Smad1 at 1:1000 dilution

Lysates/proteins at 20-50 μg per lane.

Predicted band size: 52 kDa

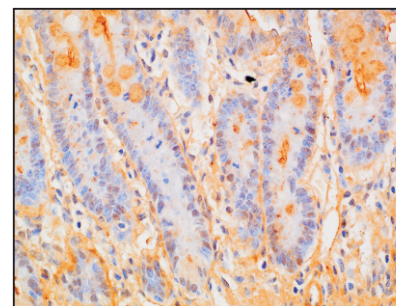
Observed band size: 52 kDa



Immunohistochemistry-Anti- Smad1 pAb

Immunohistochemical analysis of paraffin-embedded human colon cancer using anti- Smad1 Rabbit Antibody at 1:200 dilution.

Perform heat mediated antigen retrieval with Tris-EDTA buffer pH 9.0



Immunohistochemistry-Anti- Smad1 pAb

Immunohistochemical analysis of paraffin-embedded rat intestine using anti- Smad1 Rabbit Antibody at 1:200 dilution.

Perform heat mediated antigen retrieval with Tris-EDTA buffer pH 9.0