



Anti- P-delta 1 Catenin/CAS (Y335) Rabbit pAb

WL04394

For Research Use Only. Not For Use In Diagnostic Procedures

Product Information

Product name	Anti- P-delta 1 Catenin/CAS (Y335) Rabbit pAb	
Source	Rabbit	
Species reactivity	Human, Rat	
Tested applications	WB	1:500-1:1000
	IHC, IF	1:50-1:200
Cellular localization	Cytoplasm. Nucleus. Cell membrane.	
Pack size	50/100/200/500/1000μl	
Storage	Store at -20°C. Avoid freeze/thaw cycles.	
Storage buffer	Supplied in 20 mM phosphate (pH 7.5), 150 mM NaCl, 100 μg/ml	
	BSA, 50% glycerol and less than 0.02% sodium azide	

General Information

Background	This gene encodes a member of the axillary protein family and plays a role in adhesion between cells and signal transduction. The protein encoded by this gene can bind to and inhibit the transcription repressor ZBTB33, which may lead to activation of target genes in the Wnt signaling pathway (through similarity). Can be associated with the cell adhesion properties of C - and E-cadherin. The receptor signaling induced by EGF, PDGF, CSF-1, and ERBB2 receptors, SRC, and ligands are all related to cell transformation. Can promote GLIS2 C-terminal cleavage.
Immunogen	Polyclonal antibody is produced by immunizing animals with a synthetic peptide of P-delta 1 Catenin/CAS (Y335) .
Purification	Polyclonal antibody was purified by immunogen affinity chromatography.

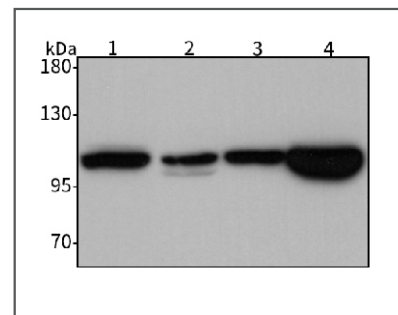


Anti- P-delta 1 Catenin/CAS (Y335) Rabbit pAb

WL04394

For Research Use Only. Not For Use In Diagnostic Procedures

Product Images



Western blot-Anti- P-delta 1 Catenin/CAS (Y335) pAb

Lane 1: Human Calu-3 cell lysate

Lane 2: Human THP-1 cell lysate

Lane 3: Human Hela cell lysate

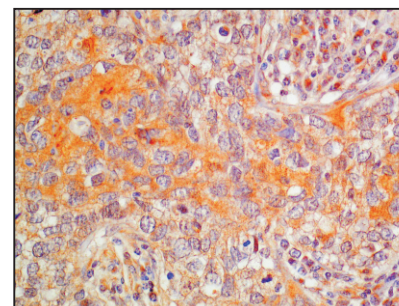
Lane 4: Human CAL-27 cell lysate

All lanes: Anti- P-delta 1 Catenin/CAS (Y335) at 1:1000 dilution

Lysates/proteins at 20-50 μg per lane.

Predicted band size: 108 kDa

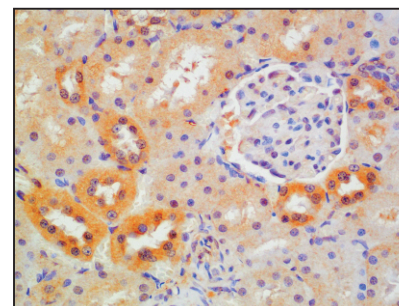
Observed band size: 108 kDa



Immunohistochemistry-Anti- P-delta 1 Catenin/CAS (Y335) pAb

Immunohistochemical analysis of paraffin-embedded human breast cancer using anti- P-delta 1 Catenin/CAS (Y335) Rabbit Antibody at 1:100 dilution.

Perform heat mediated antigen retrieval with Tris-EDTA buffer pH 9.0



Immunohistochemistry-Anti- P-delta 1 Catenin/CAS (Y335) pAb

Immunohistochemical analysis of paraffin-embedded rat kidney using anti- P-delta 1 Catenin/CAS (Y335) Rabbit Antibody at 1:100 dilution.

Perform heat mediated antigen retrieval with Tris-EDTA buffer pH 9.0

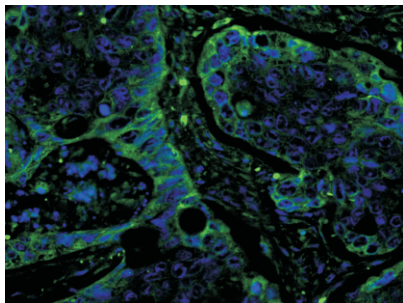


Anti- P-delta 1 Catenin/CAS (Y335) Rabbit pAb

WL04394

For Research Use Only. Not For Use In Diagnostic Procedures

Product Information



Immunofluorescence-Anti- P-delta 1 Catenin/CAS (Y335) pAb

Immunofluorescence analysis of paraffin-embedded human colon cancer using anti- P-delta 1 Catenin/CAS (Y335) Rabbit Antibody at 1:100 dilution.

Perform heat mediated antigen retrieval with Tris-EDTA buffer pH 9.0