

## Anti-Inhibin alpha Rabbit pAb



WL04690

For Research Use Only. Not For Use In Diagnostic Procedures

## Product Information

<b>Product name</b>	Anti-Inhibin alpha Rabbit pAb	
<b>Source</b>	Rabbit	
<b>Species reactivity</b>	Human, Mouse, Rat	
<b>Tested applications</b>	Western blot	1:500-1:1000
<b>Pack size</b>	50/100/200/500/1000μl	
<b>Storage</b>	Store at -20°C. <b>Avoid freeze/thaw cycles.</b>	
<b>Storage buffer</b>	Supplied in 20 mM phosphate (pH 7.5), 150 mM NaCl, 100 μg/ml BSA, 50% glycerol and less than 0.02% sodium azide	

## General Information

<b>Background</b>	Inhibin is a gonadal protein that preferentially suppresses the secretion of pituitary follicle-stimulating hormone (FSH). Proteolytically processed to generate multiple peptide products, including the alpha subunit of the inhibin A and B protein complexes. Ovarian follicular fluid and characterized as a disulphide-linked dimeric glycoprotein, inhibin belongs to the transforming growth factor $\beta$ (TGF $\beta$ ) superfamily of growth and differentiation factors. TGF $\beta$ proteins affect a range of tissues and systems beyond their role in reproduction. .
<b>Immunogen</b>	Polyclonal antibody is produced by immunizing animals with a synthetic peptide of Inhibin alpha.
<b>Purification</b>	Polyclonal antibody was purified by immunogen affinity chromatography.

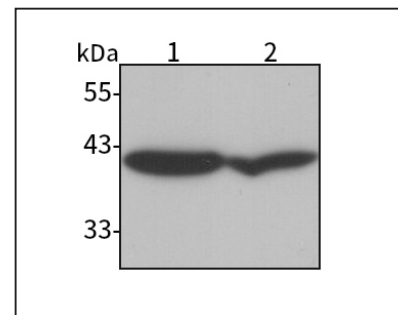
## Anti-Inhibin alpha Rabbit pAb



WL04690

For Research Use Only. Not For Use In Diagnostic Procedures

## Product Images



Western blot-Anti-Inhibin alpha pAb

Lane 1: Mouse testis tissue lysate

Lane 2: Rat testis tissue lysate

All lanes: Anti-Inhibin alpha at 1:1000 dilution

Lysates/proteins at 20-50 μg per lane.

Predicted band size: 40 kDa

Observed band size: 40 kDa