

Anti-CD2 Rabbit pAb



WL02829

For Research Use Only. Not For Use In Diagnostic Procedures

Product Information

Product name	Anti-CD2 Rabbit pAb	
Source	Rabbit	
Species reactivity	Human, Mouse, Rat	
Tested applications	WB	1:500-1:1000
	IHC, IF	1:100-1:400
Cellular localization	Membrane	
Pack size	50/100/200/500/1000µl	
Storage	Store at -20°C. Avoid freeze/thaw cycles.	
Storage buffer	Supplied in 20 mM phosphate (pH 7.5), 150 mM NaCl, 100 µg/ml	
	BSA, 50% glycerol and less than 0.02% sodium azide	

General Information

Background	Cd2 (also designated E-rosette receptor) interacts through its amino-terminal domain with the extracellular domain of CD58 (also designated CD2 ligand) to mediate cell adhesion. CD2 is a specific marker for T cells and NK cells, and can therefore be used in immunohistochemistry to identify the presence of such cells in tissue sections. The great majority of T cell lymphomas and leukaemias also express CD2, making it possible to use the presence of the antigen to distinguish these conditions from B cell neoplasms. CD2 has been shown to interact with CD2BP2, Lck and PSTPIP1.
Immunogen	Polyclonal antibody is produced by immunizing animals with a synthetic peptide of CD2.
Purification	Polyclonal antibody was purified by immunogen affinity chromatography.

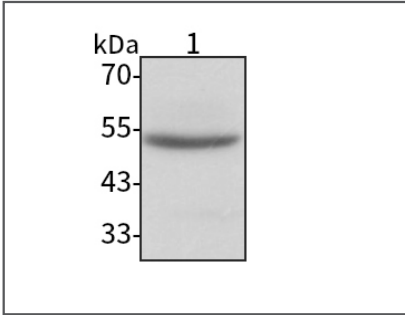
Anti-CD2 Rabbit pAb



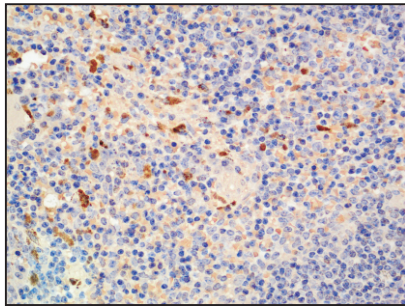
WL02829

For Research Use Only. Not For Use In Diagnostic Procedures

Product Images



Western blot-Anti-CD2 pAb
Lane 1: Human Jurkat cell lysate
All lanes: Anti-CD2 at 1:1000 dilution
Lysates/proteins at 20-50 µg per lane.
Predicted band size: 39 kDa
Observed band size: 50-60 kDa



Immunohistochemistry-Anti-CD2 pAb
Immunohistochemical analysis of paraffin-embedded mouse spleen using anti-CD2 Rabbit Antibody at 1:150 dilution.
Perform heat mediated antigen retrieval with Tris-EDTA buffer pH 9.0