

## Anti-Cdc25L Rabbit pAb



WL04192

For Research Use Only. Not For Use In Diagnostic Procedures

## Product Information

<b>Product name</b>	Anti-Cdc25L Rabbit pAb	
<b>Source</b>	Rabbit	
<b>Species reactivity</b>	Human, Mouse, Rat	
<b>Tested applications</b>	WB	1:500-1:1000
	IHC, IF	1:100-1:200
<b>Cellular localization</b>	Cytosol. Growth cone. Neuron projection. Plasma membrane	
<b>Pack size</b>	50/100/200/500/1000μl	
<b>Storage</b>	Store at -20°C. <b>Avoid freeze/thaw cycles.</b>	
<b>Storage buffer</b>	Supplied in 20 mM phosphate (pH 7.5), 150 mM NaCl, 100 μg/ml	
	BSA, 50% glycerol and less than 0.02% sodium azide	

## General Information

<b>Background</b>	The protein encoded by this gene is a guanine nucleotide exchange factor (GEF) similar to the <i>Saccharomyces cerevisiae</i> CDC25 gene product. Functional analysis has demonstrated that this protein stimulates the dissociation of GDP from RAS protein. A critical step in signal transduction responses to stimulation of cell surface receptors by their ligands involves the accumulation of Ras proteins in their active GTP-bound state. To reach their active GTP-bound state, Ras proteins must first release bound GDP, a rate-limiting step mediated by a guanine nucleotide releasing factor (GRF). The mammalian Ras p21 GRF protein has been designated Ras-GRF p140.
<b>Immunogen</b>	Polyclonal antibody is produced by immunizing animals with a synthetic peptide of Cdc25L.
<b>Purification</b>	Polyclonal antibody was purified immunogen affinity chromatography.

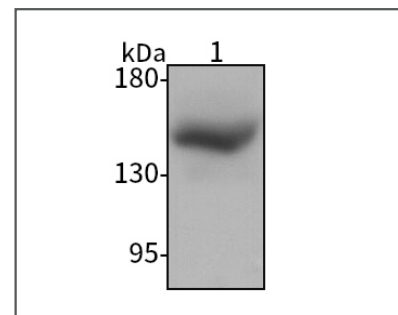
## Anti-Cdc25L Rabbit pAb



WL04192

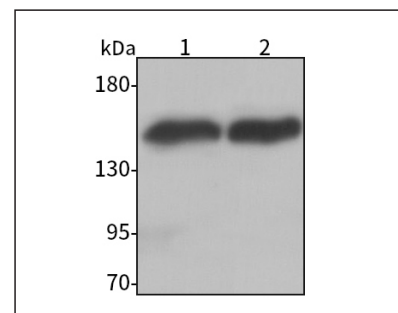
For Research Use Only. Not For Use In Diagnostic Procedures

## Product Images



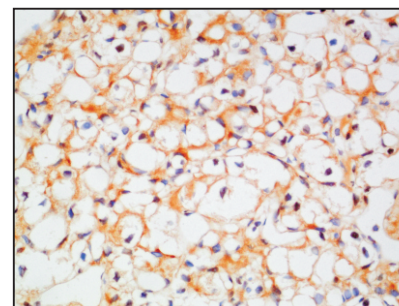
Western blot-Anti-Cdc25L pAb

Lane 1: Human Jurkat cell lysate  
 All lanes: Anti-Cdc25L at 1:1000 dilution  
 Lysates/proteins at 20-50 μg per lane.  
 Predicted band size: 150 kDa  
 Observed band size: 150 kDa



Western blot-Anti-Cdc25L pAb

Lane 1: Mouse brain tissue lysate  
 Lane 2: Rat brain tissue lysate  
 All lanes: Anti-Cdc25L at 1:1000 dilution  
 Lysates/proteins at 20-50 μg per lane.  
 Predicted band size: 150 kDa  
 Observed band size: 150 kDa



Immunohistochemistry-Anti-Cdc25L pAb

Immunohistochemical analysis of paraffin-embedded human renal clear cell carcinoma using anti-Cdc25L Rabbit Antibody at 1:200 dilution. Perform heat mediated antigen retrieval with Tris-EDTA buffer pH 9.0

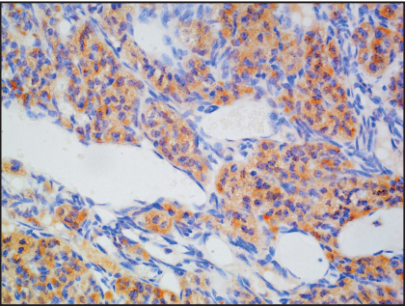
Anti-Cdc25L Rabbit pAb



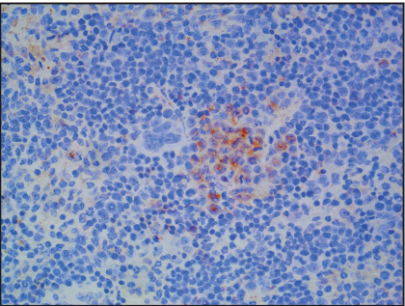
WL04192

For Research Use Only. Not For Use In Diagnostic Procedures

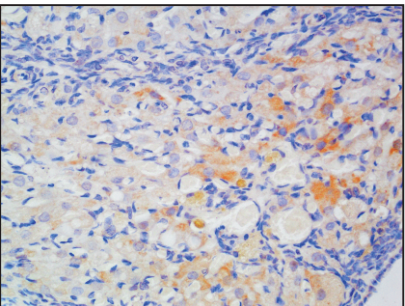
Product Information



**Immunohistochemistry-Anti-Cdc25L pAb**  
Immunohistochemical analysis of paraffin-embedded mouse ovary using anti-Cdc25L Rabbit Antibody at 1:200 dilution.  
Perform heat mediated antigen retrieval with Tris-EDTA buffer pH 9.0



**Immunohistochemistry-Anti-Cdc25L pAb**  
Immunohistochemical analysis of paraffin-embedded mouse spleen using anti-Cdc25L Rabbit Antibody at 1:200 dilution.  
Perform heat mediated antigen retrieval with Tris-EDTA buffer pH 9.0



**Immunohistochemistry-Anti-Cdc25L pAb**  
Immunohistochemical analysis of paraffin-embedded rat ovary using anti-Cdc25L Rabbit Antibody at 1:200 dilution.  
Perform heat mediated antigen retrieval with Tris-EDTA buffer pH 9.0

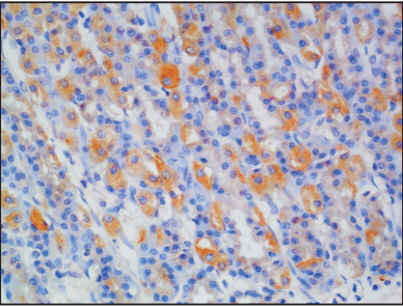
Anti-Cdc25L Rabbit pAb



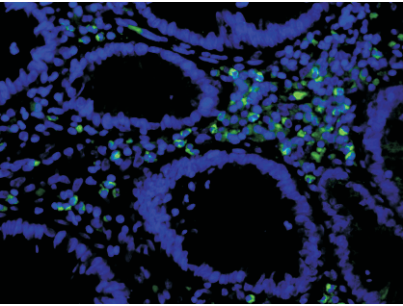
WL04192

For Research Use Only. Not For Use In Diagnostic Procedures

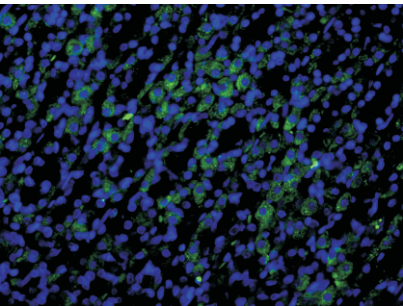
Product Information



**Immunohistochemistry-Anti-Cdc25L pAb**  
Immunohistochemical analysis of paraffin-embedded rat stomach using anti-Cdc25L Rabbit Antibody at 1:200 dilution.  
Perform heat mediated antigen retrieval with Tris-EDTA buffer pH 9.0



**Immunofluorescence-Anti-Cdc25L pAb**  
Immunofluorescence analysis of paraffin-embedded human colon cancer using anti-Cdc25L Rabbit Antibody at 1:200 dilution.  
Perform heat mediated antigen retrieval with Tris-EDTA buffer pH 9.0



**Immunofluorescence-Anti-Cdc25L pAb**  
Immunofluorescence analysis of paraffin-embedded rat stomach using anti-Cdc25L Rabbit Antibody at 1:200 dilution.  
Perform heat mediated antigen retrieval with Tris-EDTA buffer pH 9.0