

Anti-MAGEC1 Rabbit pAb



WL04658

For Research Use Only. Not For Use In Diagnostic Procedures

Product Information

Product name	Anti-MAGEC1 Rabbit pAb
Source	Rabbit
Species reactivity	Human, Mouse, Rat
Tested applications	Western blot 1:1000-1:2000

Pack size 50/100/200/500/1000μl

Storage Store at -20°C. **Avoid freeze/thaw cycles.**

Storage buffer Supplied in 20 mM phosphate (pH 7.5), 150 mM NaCl, 100 μg/ml BSA, 50% glycerol and less than 0.02% sodium azide

General Information

Background MAGEC1 is a member of the melanoma antigen gene (MAGE) family. MAGEC1 proteins of this family are tumor-specific antigens that can be recognized by autologous cytolytic T lymphocytes. MAGEC1 protein contains a large number of unique short repetitive sequences in front of the MAGE-homologous sequence, and therefore is about 800 aa longer than the other MAGE proteins.

Immunogen Polyclonal antibody is produced by immunizing animals with a synthetic peptide of MAGEC1.

Purification Polyclonal antibody was purified by Protein A affinity chromatography.

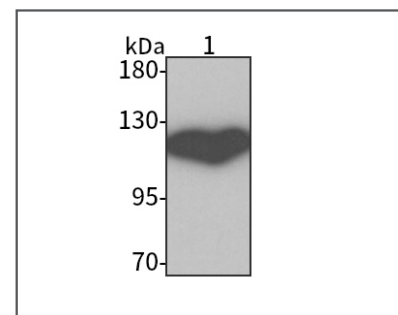
Anti-MAGEC1 Rabbit pAb



WL04658

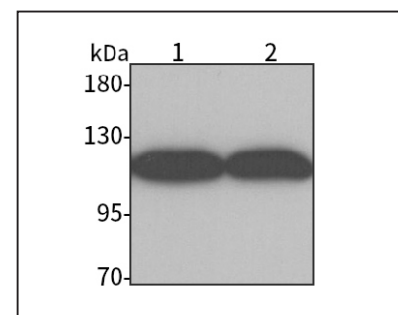
For Research Use Only. Not For Use In Diagnostic Procedures

Product Images



Western blot-Anti-MAGEC1 pAb

Lane 1: Human U-87MG cell lysate
All lanes: Anti-MAGEC1 at 1:1000 dilution
Lysates/proteins at 20-50 μg per lane.
Predicted band size: 124 kDa
Observed band size: 124 kDa



Western blot-Anti-MAGEC1 pAb

Lane 1: Mouse testis tissue lysate
Lane 2: Rat testis tissue lysate
All lanes: Anti-MAGEC1 at 1:1000 dilution
Lysates/proteins at 20-50 μg per lane.
Predicted band size: 124 kDa
Observed band size: 124 kDa