

## Anti-Nephrin Rabbit pAb



WL02442

For Research Use Only. Not For Use In Diagnostic Procedures

## Product Information

<b>Product name</b>	Anti-Nephrin Rabbit pAb
<b>Source</b>	Rabbit
<b>Species reactivity</b>	Human, Mouse, Rat
<b>Tested applications</b>	WB 1:1000-1:2000
<b>Pack size</b>	50/100/200/500/1000µl
<b>Storage</b>	Store at -20°C. <b>Avoid freeze/thaw cycles.</b>
<b>Storage buffer</b>	Supplied in 20 mM phosphate (pH 7.5), 150 mM NaCl, 100 µg/ml BSA, 50% glycerol and less than 0.02% sodium azide

## General Information

**Background**

Nephrin is a member of the immunoglobulin family of cell adhesion molecules that localizes to opposing sites of the secondary foot processes formed by podocytes, a specialized epithelial cell that ensures size- and charge-selective ultrafiltration. The gene is primarily expressed in renal tissues, and the protein is a type-1 transmembrane protein found at the slit diaphragm of glomerular podocytes. Nephrin is expressed in embryonic and adult kidneys and localizes to glomerular podocytes and the glomerular slit diaphragm. Nephrin stimulates mitogen-activated protein kinases and is enhanced by podocin, which binds to the cytoplasmic tail of nephrin.

**Immunogen**

Polyclonal antibody is produced by immunizing animals with a synthetic peptide of Nephrin.

**Purification**

Polyclonal antibody was purified by Protein A affinity chromatography.

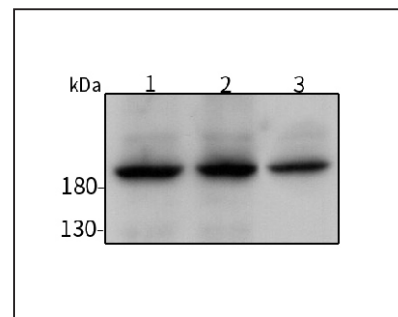
## Anti-Nephrin Rabbit pAb



WL02442

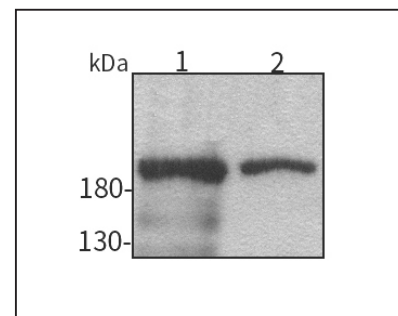
For Research Use Only. Not For Use In Diagnostic Procedures

## Product Images



## Western blot-Anti-Nephrin pAb

**Lane 1:** Human Hela cell lysate  
**Lane 2:** Human HEK-293 cell lysate  
**Lane 3:** Human MDA-MB-231 cell lysate  
**All lanes:** Anti-Nephrin at 1:1000 dilution  
 Lysates/proteins at 20-50 µg per lane.  
 Predicted band size: 136 kDa  
 Observed band size: 185 kDa



## Western blot-Anti-Nephrin pAb

**Lane 1:** Mouse kidney tissue lysate  
**Lane 2:** Rat kidney tissue lysate  
**All lanes:** Anti-Nephrin at 1:1000 dilution  
 Lysates/proteins at 20-50 µg per lane.  
 Predicted band size: 136 kDa  
 Observed band size: 185 kDa