

## Anti- SH2D4A Rabbit pAb



WLA0500

For Research Use Only. Not For Use In Diagnostic Procedures

## Product Information

<b>Product name</b>	Anti- SH2D4A Rabbit pAb	
<b>Source</b>	Rabbit	
<b>Species reactivity</b>	Human, Mouse, Rat	
<b>Tested applications</b>	WB	1:500-1:1000
	IHC, IF	1:50-1:200
<b>Cellular localization</b>	Cytoplasm.	
<b>Pack size</b>	50/100/200/500/1000μl	
<b>Storage</b>	Store at -20°C. <b>Avoid freeze/thaw cycles.</b>	
<b>Storage buffer</b>	Supplied in 20 mM phosphate (pH 7.5), 150 mM NaCl, 100 μg/ml	
	BSA, 50% glycerol and less than 0.02% sodium azide	

## General Information

<b>Background</b>	SH2D4A can compete with PLCG and bind to ESR1, inhibiting estrogen induced cell proliferation, blocking the effect of estrogen on PLCG, and inhibiting estrogen induced proliferation. It may play a role in the development and function of T cells. SH2D4A is abnormally expressed in certain cancers.
<b>Immunogen</b>	Polyclonal antibody is produced by immunizing animals with a synthetic peptide of SH2D4A.
<b>Purification</b>	Polyclonal antibody was purified by immunogen affinity chromatography.

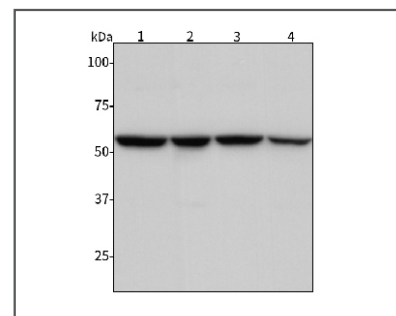
## Anti- SH2D4A Rabbit pAb



WLA0500

For Research Use Only. Not For Use In Diagnostic Procedures

## Product Images



## Western blot-Anti- SH2D4A pAb

Lane 1: Human AsPC-1 cell lysate

Lane 2: Human Huh-7 cell lysate

Lane 3: Human Hela cell lysate

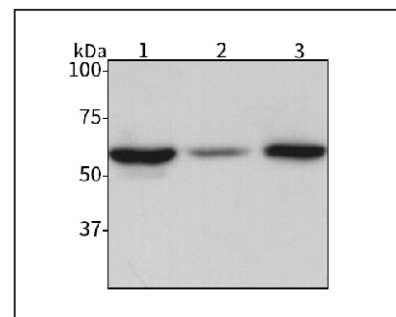
Lane 4: Human Calu-3 cell lysate

All lanes: Anti- SH2D4A at 1:1000 dilution

Lysates/proteins at 20-50 μg per lane.

Predicted band size: 48-63 kDa

Observed band size: 53 kDa



## Western blot-Anti- SH2D4A pAb

Lane 1: Mouse kidney tissue lysate

Lane 2: Mouse heart tissue lysate

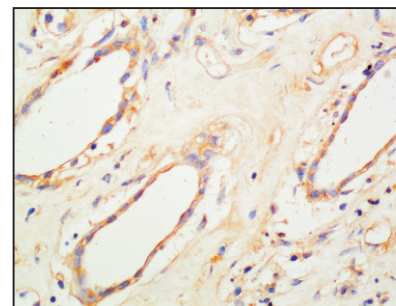
Lane 3: Rat liver tissue lysate

All lanes: Anti- SH2D4A at 1:1000 dilution

Lysates/proteins at 20-50 μg per lane.

Predicted band size: 48-63 kDa

Observed band size: 53 kDa



## Immunohistochemistry-Anti- SH2D4A pAb

Immunohistochemical analysis of paraffin-embedded human renal clear cell carcinoma using anti- SH2D4A Rabbit Antibody at 1:100 dilution. Perform heat mediated antigen retrieval with Tris-EDTA buffer pH 9.0

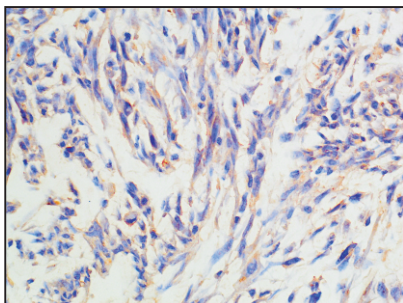
## Anti- SH2D4A Rabbit pAb



WLA0500

For Research Use Only. Not For Use In Diagnostic Procedures

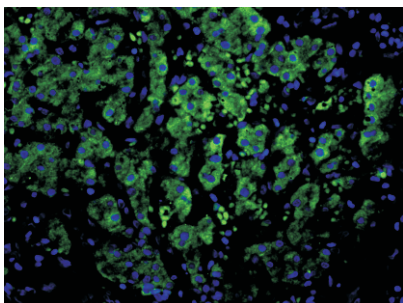
### Product Information



#### Immunohistochemistry-Anti- SH2D4A pAb

Immunohistochemical analysis of paraffin-embedded human brain glioma using anti- SH2D4A Rabbit Antibody at 1:100 dilution.

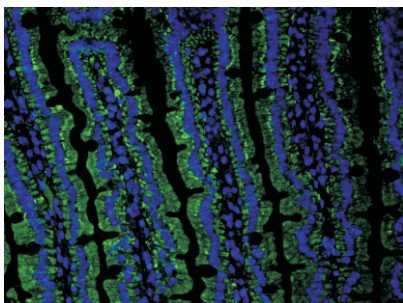
Perform heat mediated antigen retrieval with Tris-EDTA buffer pH 9.0



#### Immunofluorescence-Anti- SH2D4A pAb

Immunofluorescence analysis of paraffin-embedded human liver cancer using anti- SH2D4A Rabbit Antibody at 1:100 dilution.

Perform heat mediated antigen retrieval with Tris-EDTA buffer pH 9.0



#### Immunofluorescence-Anti- SH2D4A pAb

Immunofluorescence analysis of paraffin-embedded mouse small intestine using anti- SH2D4A Rabbit Antibody at 1:100 dilution.

Perform heat mediated antigen retrieval with Tris-EDTA buffer pH 9.0

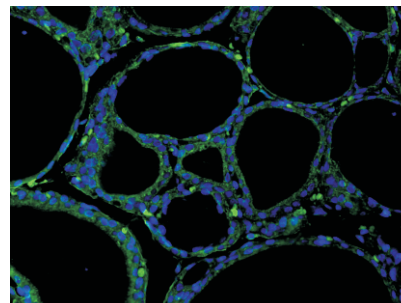
## Anti- SH2D4A Rabbit pAb



WLA0500

For Research Use Only. Not For Use In Diagnostic Procedures

### Product Information



#### Immunofluorescence-Anti- SH2D4A pAb

Immunofluorescence analysis of paraffin-embedded human rat thyroid gland using anti- SH2D4A Rabbit Antibody at 1:100 dilution.

Perform heat mediated antigen retrieval with Tris-EDTA buffer pH 9.0