

Anti-PEG10 Rabbit pAb



WL00841

For Research Use Only. Not For Use In Diagnostic Procedures

Product Information

Product name	Anti-PEG10 Rabbit pAb		
Source	Rabbit		
Species reactivity	Human, Mouse, Rat		
Tested applications	Western blot	1:1000-1:2000	
	Immunohistochemistry	1:200-1:600	
<i>*Suggested working dilutions are given as a guide only. It is recommended that the user titrates the product for use in their own experiment using appropriate negative and positive controls.</i>			
Cellular localization	Nucleus. Cytoplasm.		
Pack size	50/100/200/500/1000μl		
Storage	Store at -20°C. Avoid freeze/thaw cycles.		
Storage buffer	Supplied in 20 mM phosphate (pH 7.5), 150 mM NaCl, 100 μg/ml		
	BSA, 50% glycerol and less than 0.02% sodium azide		

General Information

Background	Peg10 (paternally expressed gene 10), also known as EDR, KIAA1051, MAR2, MART2, MEF3L1 or RGAG3, is a 708 amino acid protein that localizes to both the nucleus and they cytoplasm and contains one CCHC-type zinc finger. It contains two overlapping open reading frames, RF1 and RF2, and expresses two proteins: a shorter, gag-like protein (with a CCHC-type zinc finger domain) from RF1; and a longer, gag/pol-like fusion protein (with an additional aspartic protease motif) from RF1/RF2 by -1 translational frameshifting (-1 FS). Expression of these two isoforms only comes from the paternal allele due to imprinting. Increased gene expression (as observed by an increase in mRNA levels) is associated with hepatocellular carcinomas.
Immunogen	Polyclonal antibody is produced by immunizing animals with a synthetic peptide of PEG10.
Purification	Polyclonal antibody was purified by Protein A affinity chromatography.

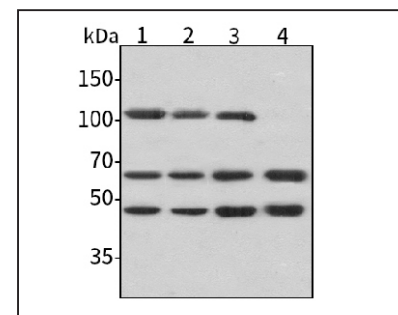
Anti-PEG10 Rabbit pAb



WL00841

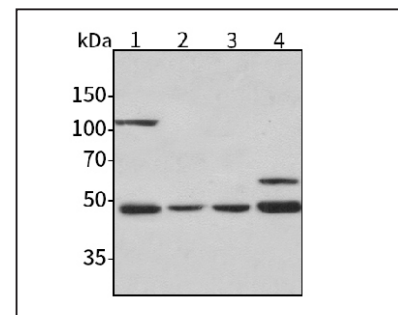
For Research Use Only. Not For Use In Diagnostic Procedures

Product Images



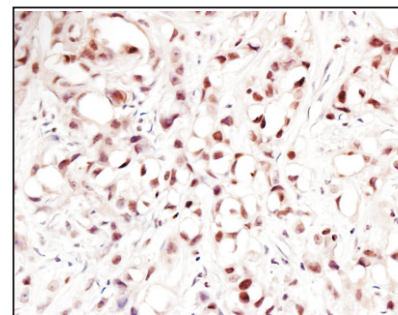
Western blot-Anti-PEG10 pAb

Lane 1: Human MGC-803 cell lysate 30μg
 Lane 2: Human SGC-7901 cell lysate 30μg
 Lane 3: Human MCF-7 cell lysate 30μg
 Lane 4: Human HEK-293 cell lysate 30μg
 All lanes: Anti-PEG10 at 1:1000 dilution
 Lysates/proteins at 20-50 μg per lane.
 Predicted band size: 37,80 kDa
 Observed band size: 37-100 kDa



Western blot-Anti-PEG10 pAb

Lane 1: Mouse heart tissue lysate 30μg
 Lane 2: Mouse colon tissue lysate 30μg
 Lane 3: Rat spleen tissue lysate 30μg
 Lane 4: Rat stomach tissue lysate 30μg
 All lanes: Anti-PEG10 at 1:1000 dilution
 Lysates/proteins at 20-50 μg per lane.
 Predicted band size: 37,80 kDa
 Observed band size: 37-100 kDa



Immunohistochemistry-Anti-PEG10 pAb

Sample: Human breast cancer tissue
 Antigen retrieval: pH 9.0 Tris- EDTA buffer
 Primary antibody: 1:400, 4°C, overnight
 Secondary antibody-Biotin: 1:150, 37°C, 1h
 Streptavidin-HRP: 1:200, 37°C, 30min
 Color Developing: DAB

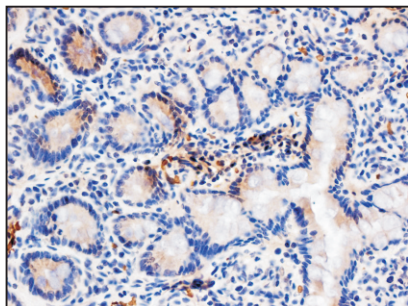
Anti-PEG10 Rabbit pAb



WL00841

For Research Use Only. Not For Use In Diagnostic Procedures

Product Information



Immunohistochemistry-Anti-PEG10 pAb

Sample: Rat colon (LPS treated) tissue
Antigen retrieval: pH 9.0 Tris-EDTA buffer
Primary antibody: 1:200, 4°C, overnight
Secondary antibody-Biotin: 1:150, 37°C, 1h
Streptavidin-HRP: 1:200, 37°C, 30min
Color Developing: DAB