

## Anti-Myoglobin Rabbit pAb



WL01552

For Research Use Only. Not For Use In Diagnostic Procedures

## Product Information

<b>Product name</b>	Anti-Myoglobin Rabbit pAb		
<b>Source</b>	Rabbit		
<b>Species reactivity</b>	Human		
<b>Tested applications</b>	WB	1:1000-1:2000	
<b>Pack size</b>	50/100/200/500/1000µl		
<b>Storage</b>	Store at -20°C. <b>Avoid freeze/thaw cycles.</b>		
<b>Storage buffer</b>	Supplied in 20 mM phosphate (pH 7.5), 150 mM NaCl, 100 µg/ml BSA, 50% glycerol and less than 0.02% sodium azide		

## General Information

<b>Background</b>	Myoglobin is an iron- and oxygen-binding protein found in the muscle tissue of vertebrates in general and in almost all mammals. It is related to hemoglobin, which is the iron- and oxygen-binding protein in blood, specifically in the red blood cells. Myoglobin is only found in the bloodstream after muscle injury. It is an abnormal finding, and can be diagnostically relevant when found in blood. Diving mammals such as whales and seals have muscles with particularly high abundance of myoglobin. Myoglobin is found in Type I muscle, Type II A and Type II B, but most texts consider myoglobin not to be found in smooth muscle.
<b>Immunogen</b>	Polyclonal antibody is produced by immunizing animals with a synthetic peptide of Myoglobin.
<b>Purification</b>	Polyclonal antibody was purified by protein A affinity chromatography.

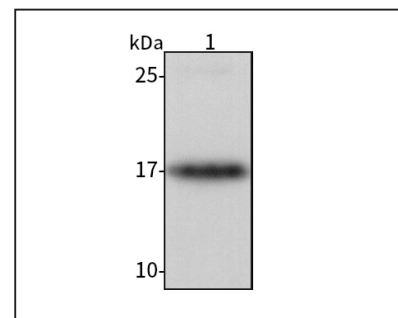
## Anti-Myoglobin Rabbit pAb



WL01552

For Research Use Only. Not For Use In Diagnostic Procedures

## Product Images



## Western blot-Anti-Myoglobin pAb

Lane 1: Human AC-16 cell lysate  
**All lanes:** Anti-Myoglobin at 1:1000 dilution  
 Lysates/proteins at 20-50 µg per lane.  
 Predicted band size: 17 kDa  
 Observed band size: 17 kDa