

Anti- p-MLC2 (Ser19) Rabbit pAb



WLA0486

For Research Use Only. Not For Use In Diagnostic Procedures

Product Information

Product name Anti- p-MLC2 (Ser19) Rabbit pAb**Source** Rabbit**Species reactivity** Human, Mouse, Rat**Tested applications** WB 1:500-1:1000**Cellular localization** Cytoplasm. Cytoskeleton.**Pack size** 50/100/200/500/1000µl**Storage** Store at -20°C. **Avoid freeze/thaw cycles.****Storage buffer** Supplied in 20 mM phosphate (pH 7.5), 150 mM NaCl, 100 µg/ml BSA, 50% glycerol and less than 0.02% sodium azide

General Information

Background

Myosin regulated photopeptide 9 (MYL9), also known as MLC2, belongs to the myosin regulatory subunit. Myosin is a structural component of muscles. MYL9 plays an important role in regulating smooth muscle and non muscle cell contractile activity through its phosphorylation of THR19 and SER20. Related to cytokines, receptor upper limits, and cell movement. It can bind to calcium and be activated by myosin light chain kinase. Some studies suggest that MYL9 may play an important role in various human cancers.

Immunogen

Polyclonal antibody is produced by immunizing animals with a synthetic peptide of p-MLC2 (Ser19) .

Purification

Polyclonal antibody was purified by immunogen affinity chromatography.

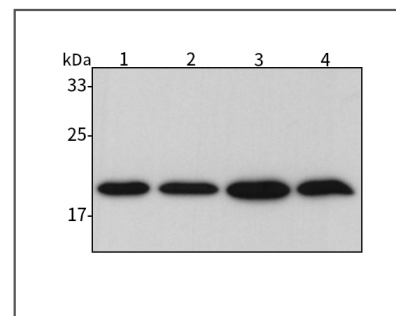
Anti- p-MLC2 (Ser19) Rabbit pAb



WLA0486

For Research Use Only. Not For Use In Diagnostic Procedures

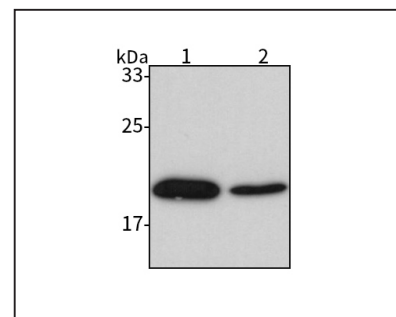
Product Images

**Western blot-Anti- p-MLC2 (Ser19) pAb****Lane 1:** Human Huh-7 cell lysate**Lane 2:** Human THP-1 cell lysate**Lane 3:** Human Hela cell lysate**Lane 4:** Human MDA-MB-231 cell lysate**All lanes:** Anti- p-MLC2 (Ser19) at 1:1000 dilution

Lysates/proteins at 20-50 µg per lane.

Predicted band size: 20 kDa

Observed band size: 20 kDa

**Western blot-Anti- p-MLC2 (Ser19) pAb****Lane 1:** Mouse heart tissue lysate**Lane 2:** Rat kidney tissue lysate**All lanes:** Anti- p-MLC2 (Ser19) at 1:1000 dilution

Lysates/proteins at 20-50 µg per lane.

Predicted band size: 20 kDa

Observed band size: 20 kDa