

Anti-Somatostatin Rabbit pAb



WL01001

For Research Use Only. Not For Use In Diagnostic Procedures

Product Information

Product name	Anti-Somatostatin Rabbit pAb		
Source	Rabbit		
Species reactivity	Human, Mouse, Rat		
Tested applications	Western blot	1:1000-1:2000	
	Immunohistochemistry	1:100-1:400	
<i>*Suggested working dilutions are given as a guide only. It is recommended that the user titrates the product for use in their own experiment using appropriate negative and positive controls.</i>			
Cellular localization	Secreted.		
Pack size	50/100/200/500/1000µl		
Storage	Store at -20°C. Avoid freeze/thaw cycles.		
Storage buffer	Supplied in 20 mM phosphate (pH 7.5), 150 mM NaCl, 100 µg/ml		
	BSA, 50% glycerol and less than 0.02% sodium azide		

General Information

Background	Somatostatin, also known as growth hormone-inhibiting hormone (GHIH) or by several other names, is a peptide hormone that regulates the endocrine system and affects neurotransmission and cell proliferation via interaction with G protein-coupled somatostatin receptors and inhibition of the release of numerous secondary hormones. Somatostatin is found in both the hypothalamus and pancreas. Somatostatin is thought to be involved in the regulation of Insulin synthesis. y. Somatostatin affects rates of neurotransmission in the central nervous system and proliferation of both normal and tumorigenic cells.
Immunogen	Polyclonal antibody is produced by immunizing animals with a synthetic peptide of Somatostatin.
Purification	Polyclonal antibody was purified by Protein A affinity chromatography.

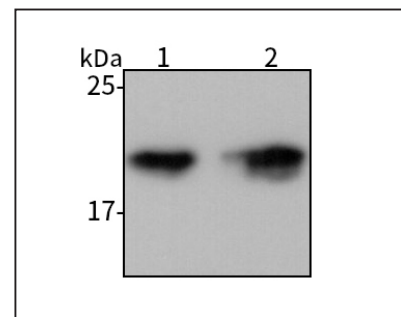
Anti-Somatostatin Rabbit pAb



WL01001

For Research Use Only. Not For Use In Diagnostic Procedures

Product Images



Western blot-Anti-Somatostatin pAb

Lane 1: Mouse brain tissue lysate

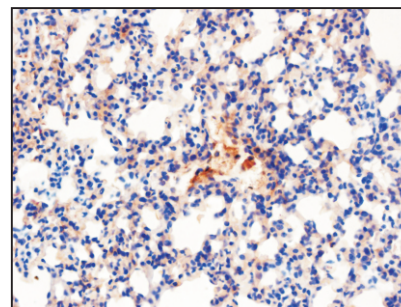
Lane 2: Rat brain tissue lysate

All lanes: Anti-Somatostatin at 1:1000 dilution

Lysates/proteins at 20-50 µg per lane.

Predicted band size: 13 kDa

Observed band size: 20 kDa



Immunohistochemistry-Anti-Somatostatin pAb

Sample: Mouse lung (LPS treated) tissue

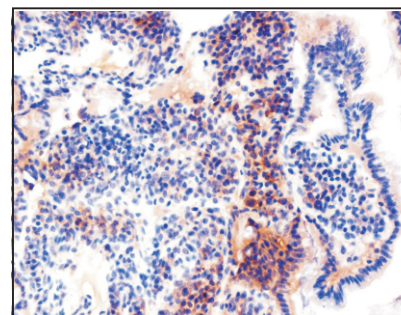
Antigen retrieval: pH 9.0 Tris-EDTA buffer

Primary antibody: 1:200, 4°C, overnight

Secondary antibody-Biotin: 1:150, 37°C, 1h

Streptavidin-HRP: 1:200, 37°C, 30min

Color Developing: DAB



Immunohistochemistry-Anti-Somatostatin pAb

Sample: Rat colon (LPS treated) tissue

Antigen retrieval: pH 9.0 Tris-EDTA buffer

Primary antibody: 1:200, 4°C, overnight

Secondary antibody-Biotin: 1:150, 37°C, 1h

Streptavidin-HRP: 1:200, 37°C, 30min

Color Developing: DAB