

## Anti-TLR6 Rabbit pAb



WL04528

For Research Use Only. Not For Use In Diagnostic Procedures

## Product Information

<b>Product name</b>	Anti-TLR6 Rabbit pAb
<b>Source</b>	Rabbit
<b>Species reactivity</b>	Human
<b>Tested applications</b>	Western blot 1:1000-1:2000
	<i>*Suggested working dilutions are given as a guide only. It is recommended that the user titrates the product for use in their own experiment using appropriate negative and positive controls.</i>
<b>Molecular Wt.</b>	Predicted band size: 56 kDa Observed band size: 95-110 kDa
<b>Pack size</b>	50/100/200/500/1000μl
<b>Storage</b>	Store at -20°C. <b>Avoid freeze/thaw cycles.</b>
<b>Storage buffer</b>	Supplied in 20 mM phosphate (pH 7.5), 150 mM NaCl, 100 μg/ml BSA, 50% glycerol and less than 0.02% sodium azide

## General Information

<b>Background</b>	TLR6, also known as CD286, belongs to the Toll-like receptor (TLR) family which are important in the innate immune response to pathogens. TLRs are highly conserved from Drosophila to humans and share structural and functional similarities. TLRs recognize conserved motifs found in various pathogens and mediate defense responses. They recognize pathogen-associated molecular patterns (PAMPs) that are expressed on infectious agents, and mediate the production of cytokines necessary for the development of effective immunity.
<b>Immunogen</b>	Polyclonal antibody is produced by immunizing animals with a synthetic peptide of TLR6.
<b>Purification</b>	Polyclonal antibody was purified by Protein A affinity chromatography.

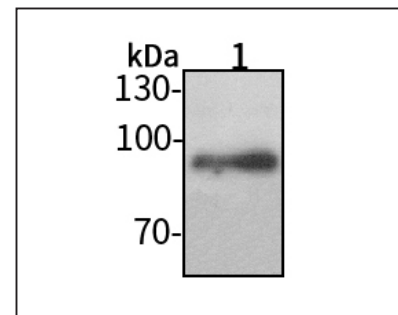
## Anti-TLR6 Rabbit pAb



WL04528

For Research Use Only. Not For Use In Diagnostic Procedures

## Product Images



## Western blot-Anti-TLR6 pAb

Lane 1: Human MCF-7 cell lysate 30μg  
 Separation gel: 8% polyacrylamide  
 Electrophoresis: 100V, 4°C, 3h  
 Transmembrane: 100V, 4°C, 1h  
 Blocking: 5% w/v nonfat dry milk, 1×TBST, at RT with gentle shaking  
 Primary antibody: 1:1000 in blocking buffer, 4°C, overnight  
 Secondary antibody (WLA023a) : 1:5000-1:10000, 45min  
 Detection: ECL, 30s-2min