

## Anti-Rad51 Rabbit pAb



WL02913

For Research Use Only. Not For Use In Diagnostic Procedures

## Product Information

<b>Product name</b>	Anti-Rad51 Rabbit pAb		
<b>Source</b>	Rabbit		
<b>Species reactivity</b>	Human, Mouse, Rat		
<b>Tested applications</b>	Western blot	1:500-1:1000	
	Immunohistochemistry	1:100-1:400	
<i>*Suggested working dilutions are given as a guide only. It is recommended that the user titrates the product for use in their own experiment using appropriate negative and positive controls.</i>			
<b>Pack size</b>	50/100/200/500/1000μl		
<b>Storage</b>	Store at -20°C. <b>Avoid freeze/thaw cycles.</b>		
<b>Storage buffer</b>	Supplied in 20 mM phosphate (pH 7.5), 150 mM NaCl, 100 μg/ml		
	BSA, 50% glycerol and less than 0.02% sodium azide		

## General Information

<b>Background</b>	Rad51 family members are highly similar to bacterial RecA and Saccharomyces cerevisiae Rad51, and are known to be involved in the homologous recombination and repair of DNA. This protein can interact with the ssDNA-binding protein RPA and Rad52, and it is thought to play roles in homologous pairing and strand transfer of DNA. This protein is also found to interact with BRCA1 and BRCA2, which may be important for the cellular response to DNA damage. BRCA2 is shown to regulate both the intracellular localization and DNA-binding ability of this protein. Loss of these controls following BRCA2 inactivation may be a key event leading to genomic instability and tumorigenesis.
<b>Immunogen</b>	Polyclonal antibody is produced by immunizing animals with a synthetic peptide of Rad51.
<b>Purification</b>	Polyclonal antibody was purified by immunogen affinity chromatography.

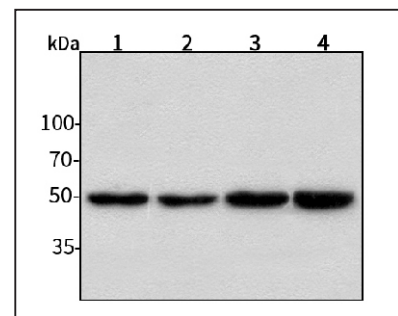
## Anti-Rad51 Rabbit pAb



WL02913

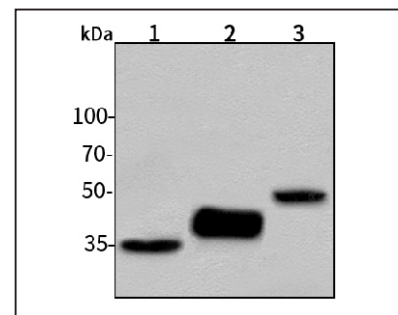
For Research Use Only. Not For Use In Diagnostic Procedures

## Product Images



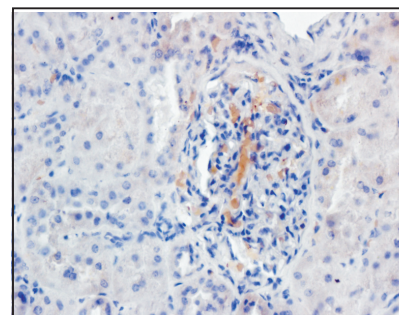
## Western blot-Anti-Rad51 pAb

Lane 1: Human HepG2 cell lysate  
 Lane 2: Human Hela cell lysate  
 Lane 3: Human BGC-823 cell lysate  
 Lane 4: Human MGC-803 cell lysate  
 All lanes: Anti-Rad51 at 1:1000 dilution  
 Lysates/proteins at 20-50 μg per lane.  
 Predicted band size: 37 kDa  
 Observed band size: 37 kDa



## Western blot-Anti-Rad51 pAb

Lane 1: Mouse heart tissue lysate  
 Lane 2: Mouse liver tissue lysate  
 Lane 3: Rat brain tissue lysate  
 All lanes: Anti-Rad51 at 1:1000 dilution  
 Lysates/proteins at 20-50 μg per lane.  
 Predicted band size: 37 kDa  
 Observed band size: 37 kDa



## Immunohistochemistry-Anti-Rad51 pAb

Sample: Human kidney cancer tissue  
 Antigen retrieval: pH 9.0 Tris-EDTA buffer  
 Primary antibody: 1:150, 4°C, overnight  
 Secondary antibody-Biotin: 1:150, 37°C, 1h  
 Streptavidin-HRP: 1:200, 37°C, 30min  
 Color Developing: DAB

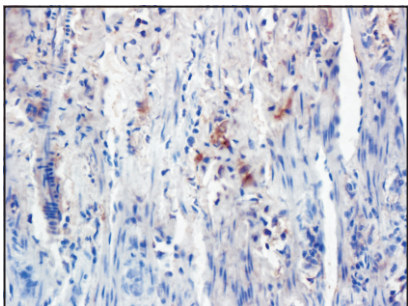
## Anti-Rad51 Rabbit pAb



WL02913

For Research Use Only. Not For Use In Diagnostic Procedures

## Product Images



### Immunohistochemistry-Anti-Rad51 pAb

**Sample:** Rat colon tissue

**Antigen retrieval:** pH 9.0 Tris-EDTA buffer

**Primary antibody:** 1:150, 4°C, overnight

**Secondary antibody-Biotin:** 1:150, 37°C, 1h

**Streptavidin-HRP:** 1:200, 37°C, 30min

**Color Developing:** DAB