

Anti-PKC beta 1 Rabbit pAb



WL03143

For Research Use Only. Not For Use In Diagnostic Procedures

Product Information

Product name	Anti-PKC beta 1 Rabbit pAb	
Source	Rabbit	
Species reactivity	Human, Mouse, Rat	
Tested applications	WB	1:500-1:1000
	IHC	1:200
	IF	1:200

Cellular localization Cytoplasm. Nucleus. Membrane

Pack size 50/100/200/500/1000μl

Storage Store at -20°C. **Avoid freeze/thaw cycles.**

Storage buffer Supplied in 20 mM phosphate (pH 7.5), 150 mM NaCl, 100 μg/ml BSA, 50% glycerol and less than 0.02% sodium azide

General Information

Background Protein kinase C (PKC) is a family of serine- and threonine-specific protein kinases that can be activated by calcium and second messenger diacylglycerol. PKC beta 1 is one of the PKC family members. This protein kinase has been reported to be involved in many different cellular functions, such as B cell activation, apoptosis induction, endothelial cell proliferation, and intestinal sugar absorption. Studies in mice also suggest that this kinase may also regulate neuronal functions and correlate fear-induced conflict behavior after stress. Alternatively spliced transcript variants encoding distinct isoforms have been reported.

Immunogen Polyclonal antibody is produced by immunizing animals with a synthetic peptide of PKC beta 1.

Purification Polyclonal antibody was purified by immunogen affinity chromatography.

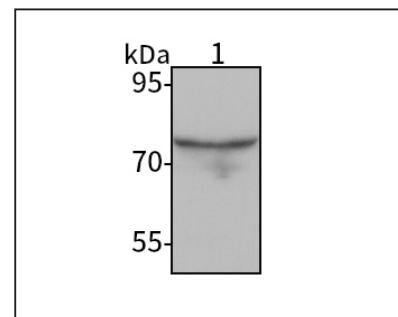
Anti-PKC beta 1 Rabbit pAb



WL03143

For Research Use Only. Not For Use In Diagnostic Procedures

Product Images



Western blot-Anti-PKC beta 1 pAb

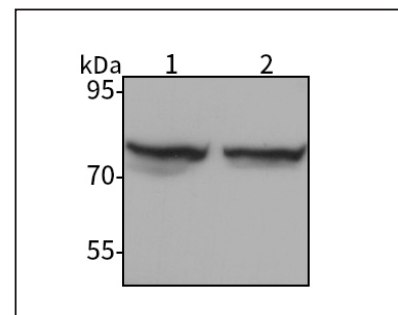
Lane 1: Human K-562 cell lysate

All lanes: Anti-PKC beta 1 at 1:500 dilution

Lysates/proteins at 20-50 μg per lane.

Predicted band size: 77 kDa

Observed band size: 76 kDa



Western blot-Anti-PKC beta 1 pAb

Lane 1: Mouse brain tissue lysate

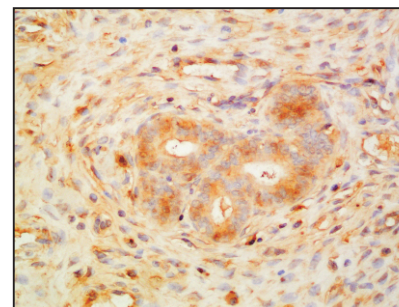
Lane 2: Rat brain tissue lysate

All lanes: Anti-PKC beta 1 at 1:500 dilution

Lysates/proteins at 20-50 μg per lane.

Predicted band size: 77 kDa

Observed band size: 76 kDa



Immunohistochemistry-Anti-PKC beta 1 pAb

Immunohistochemical analysis of paraffin-embedded rat uterus using anti-PKC beta 1 Rabbit Antibody at 1:200 dilution.

Perform heat mediated antigen retrieval with Tris-EDTA buffer pH 9.0

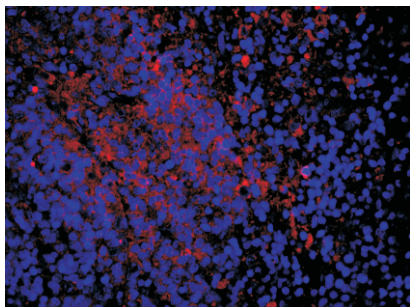
Anti-PKC beta 1 Rabbit pAb



For Research Use Only. Not For Use In Diagnostic Procedures

WL03143

Product Information



Immunofluorescence-Anti-PKC beta 1 pAb

Immunofluorescence analysis of paraffin-embedded mouse uterus using anti-PKC beta 1 Rabbit Antibody at 1:200 dilution.

Perform heat mediated antigen retrieval with Tris-EDTA buffer pH 9.0