

Anti-c-Cbl Rabbit pAb



WL0155

For Research Use Only. Not For Use In Diagnostic Procedures

Product Information

Product name	Anti-c-Cbl Rabbit pAb		
Source	Rabbit		
Species reactivity	Human		
Tested applications	WB	1:500-1:1000	
Pack size	50/100/200/500/1000μl		
Storage	Store at -20°C. Avoid freeze/thaw cycles.		
Storage buffer	Supplied in 20 mM phosphate (pH 7.5), 150 mM NaCl, 100 μg/ml BSA, 50% glycerol and less than 0.02% sodium azide		

General Information

Background

This c-Cbl is a RING finger E3 ubiquitin ligase. The encoded protein is one of the enzymes required for targeting substrates for degradation by the proteasome. c-Cbl mediates the transfer of ubiquitin from ubiquitin conjugating enzymes (E2) to specific substrates. This protein also contains an N-terminal phosphotyrosine binding domain that allows it to interact with numerous tyrosine-phosphorylated substrates and target them for proteasome degradation. As such it functions as a negative regulator of many signal transduction pathways.

Immunogen

Polyclonal antibody is produced by immunizing animals with a synthetic peptide of c-Cbl.

Purification

Polyclonal antibody was purified by immunogen affinity chromatography.

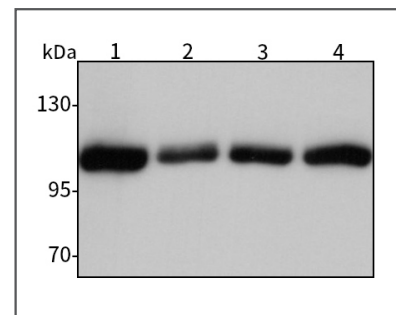
Anti-c-Cbl Rabbit pAb



WL0155

For Research Use Only. Not For Use In Diagnostic Procedures

Product Images



Western blot-Anti-c-Cbl pAb

Lane 1: Human THP-1 cell lysate

Lane 2: Human CAL-27 cell lysate

Lane 3: Human HL-60 cell lysate

Lane 4: Human Raji cell lysate

All lanes: Anti-c-Cbl at 1:1000 dilution

Lysates/proteins at 20-50 μg per lane.

Predicted band size: 99 kDa

Observed band size: 110 kDa