

## Anti-P-TAU (S396) Rabbit pAb



WL03540

For Research Use Only. Not For Use In Diagnostic Procedures

## Product Information

<b>Product name</b>	Anti-P-TAU (S396) Rabbit pAb	
<b>Source</b>	Rabbit	
<b>Species reactivity</b>	Human, Mouse, Rat	
<b>Tested applications</b>	WB	1:1000-1:2000
	IHC	1:500
	IF	1:100-1:500
<b>Cellular localization</b>	Cytoplasm. Cell membrane. cytoskeleton. Cell projection, axon.	
<b>Pack size</b>	50/100/200/500/1000μl	
<b>Storage</b>	Store at -20°C. <b>Avoid freeze/thaw cycles.</b>	
<b>Storage buffer</b>	Supplied in 20 mM phosphate (pH 7.5), 150 mM NaCl, 100 μg/ml	
	BSA, 50% glycerol and less than 0.02% sodium azide	

## General Information

<b>Background</b>	Tau protein is a highly soluble microtubule-associated protein (MAP). In humans, these proteins are found mostly in neurons compared to non-neuronal cells. Tau is a phosphoprotein with 79 potential Serine (Ser) and Threonine (Thr) phosphorylation sites on the longest tau isoform. The abnormally hyperphosphorylated microtubule-associated protein Tau (p-Tau) inhibits microtubule assembly and disrupts microtubules by competing with tubulin/microtubules in associating with normal Tau, MAP1 and MAP2. p-Tau can be dephosphorylated by protein phosphatase PP-2B, PP-2A and PP-1, which are all present in neurons. p-Tau is predominately present in neuronal somata and dendrites and, to a lesser extent in axons.
<b>Immunogen</b>	Polyclonal antibody is produced by immunizing animals with a synthetic peptide of P-TAU (S396).
<b>Purification</b>	Polyclonal antibody was purified by Protein A affinity chromatography.

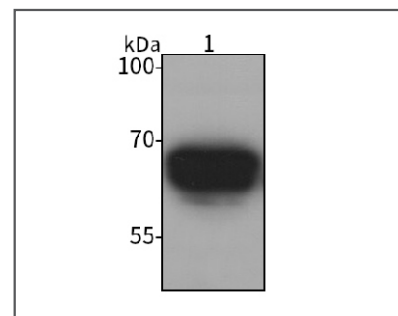
## Anti-P-TAU (S396) Rabbit pAb



WL03540

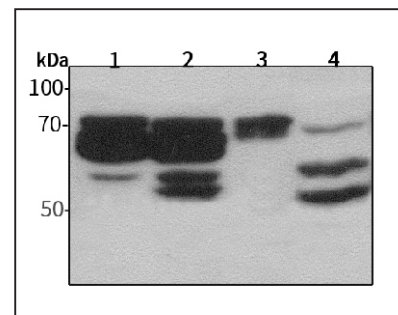
For Research Use Only. Not For Use In Diagnostic Procedures

## Product Images



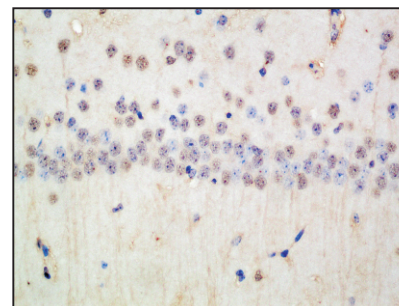
Western blot-Anti-P-TAU (S396) pAb

Lane 1: Human SH-SY5Y cell lysate  
 All lanes: Anti-P-TAU (S396) at 1:1000 dilution  
 Lysates/proteins at 20-50 μg per lane.  
 Predicted band size: 37-46, 79-81 kDa  
 Observed band size: 55-70 kDa



Western blot-Anti-P-TAU (S396) pAb

Lane 1: Mouse brain tissue lysate  
 Lane 2: Mouse cerebellum tissue lysate  
 Lane 3: Rat brain tissue lysate  
 Lane 4: Rat cerebellum tissue lysate  
 All lanes: Anti-P-TAU (S396) at 1:1000 dilution  
 Lysates/proteins at 20-50 μg per lane.  
 Predicted band size: 37-46, 79-81 kDa  
 Observed band size: 55-70 kDa



Immunohistochemistry-Anti-TAU (S396) pAb

Immunohistochemical analysis of paraffin-embedded mouse hippocampus using anti-P-TAU (S396) Rabbit Antibody at 1:500 dilution. Perform heat mediated antigen retrieval with Tris-EDTA buffer pH 9.0

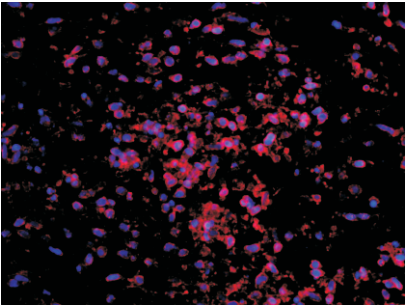
Anti-P-TAU (S396) Rabbit pAb



WL03540

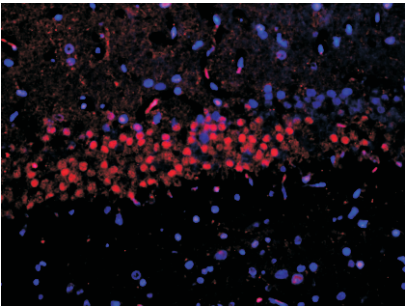
For Research Use Only. Not For Use In Diagnostic Procedures

Product Information



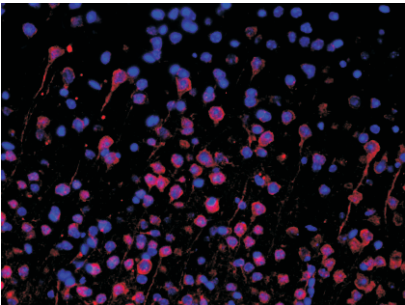
Immunofluorescence-Anti-P-TAU (S396) pAb

Immunofluorescence analysis of paraffin-embedded human brain glioma using anti-P-TAU (S396) Rabbit Antibody at 1:200 dilution.  
Perform heat mediated antigen retrieval with Tris-EDTA buffer pH 9.0



Immunofluorescence-Anti-P-TAU (S396) pAb

Immunofluorescence analysis of paraffin-embedded rat brain using anti-P-TAU (S396) Rabbit Antibody at 1:200 dilution.  
Perform heat mediated antigen retrieval with Tris-EDTA buffer pH 9.0



Immunofluorescence-Anti-P-TAU (S396) pAb

Immunofluorescence analysis of paraffin-embedded mouse cerebral using anti-P-TAU (S396) Rabbit Antibody at 1:500 dilution.  
Perform heat mediated antigen retrieval with Tris-EDTA buffer pH 9.0

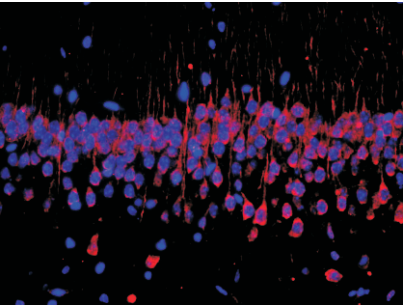
Anti-P-TAU (S396) Rabbit pAb



WL03540

For Research Use Only. Not For Use In Diagnostic Procedures

Product Information



Immunofluorescence-Anti-P-TAU (S396) pAb

Immunofluorescence analysis of paraffin-embedded mouse hippocampus using anti-P-TAU (S396) Rabbit Antibody at 1:500 dilution.  
Perform heat mediated antigen retrieval with Tris-EDTA buffer pH 9.0