

Product Datasheet

Anti-SLC12A1/NKCC2 Rabbit pAb



WL04681

For Research Use Only. Not For Use In Diagnostic Procedures

Product Information

Product name	Anti-SLC12A1/NKCC2 Rabbit pAb		
Source	Rabbit		
Species reactivity	Human		
Tested applications	Western blot	1:1000-1:2000	
	<i>*Suggested working dilutions are given as a guide only. It is recommended that the user titrates the product for use in their own experiment using appropriate negative and positive controls.</i>		
Pack size	50/100/200/500/1000µl		
Storage	Store at -20°C. Avoid freeze/thaw cycles.		
Storage buffer	Supplied in 20 mM phosphate (pH 7.5), 150 mM NaCl, 100 µg/ml BSA, 50% glycerol and less than 0.02% sodium azide		

General Information

Background	Na-K-Cl cotransporters (NKCC) are channel proteins that aid in the transcellular movement of chloride across both secretory and absorptive epithelia. It plays a key role in concentrating urine and accounts for most of the NaCl resorption. It is sensitive to such diuretics as furosemide and bumetanide.
Immunogen	Polyclonal antibody is produced by immunizing animals with a synthetic peptide of SLC12A1/NKCC2.
Purification	Polyclonal antibody was purified by Protein A affinity chromatography.

Product Datasheet

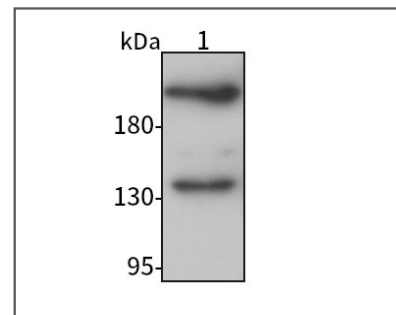
Anti-SLC12A1/NKCC2 Rabbit pAb



WL04681

For Research Use Only. Not For Use In Diagnostic Procedures

Product Images



Western blot-Anti-SLC12A1/NKCC2 pAb

Lane 1: Human HEK-293 cell lysate
All lanes: Anti-SLC12A1/NKCC2 at 1:1000 dilution
Lysates/proteins at 20-50 µg per lane.
Predicted band size: 121 kDa
Observed band size: 135-290 kDa