

Anti-Ral A Rabbit pAb



WL04631

For Research Use Only. Not For Use In Diagnostic Procedures

Product Information

Product name	Anti-Ral A Rabbit pAb
Source	Rabbit
Species reactivity	Human, Mouse, Rat
Tested applications	Western Blot 1:500-1:1000 <small><i>*Suggested working dilutions are given as a guide only. It is recommended that the user titrates the product for use in their own experiment using appropriate negative and positive controls.</i></small>
Molecular Wt.	Predicted band size: 24 kDa Observed band size: 30 kDa
Pack size	50/100/200/500/1000µl
Storage	Store at -20°C. Avoid freeze/thaw cycles.
Storage buffer	Supplied in 20 mM phosphate (pH 7.5), 150 mM NaCl, 100 µg/ml BSA, 50% glycerol and less than 0.02% sodium azide

General Information

Background	RalA belongs to the small GTPase superfamily. Multifunctional GTPase involved in a variety of cellular processes including gene expression, cell migration, cell proliferation, oncogenic transformation and membrane trafficking. RALA plays a role in the early stages of cytokinesis and is required to tether the exocyst to the cytokinetic furrow.
-------------------	--

Immunogen	Polyclonal antibody is produced by immunizing animals with a recombinant protein of Ral A.
------------------	--

Purification	Polyclonal antibody was purified by immunogen affinity chromatography.
---------------------	--

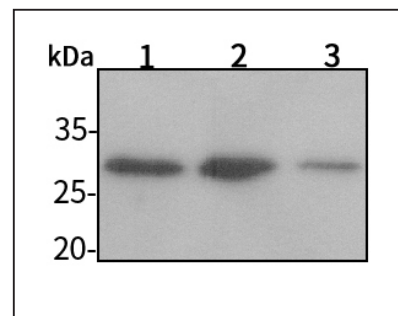
Anti-Ral A Rabbit pAb



WL04631

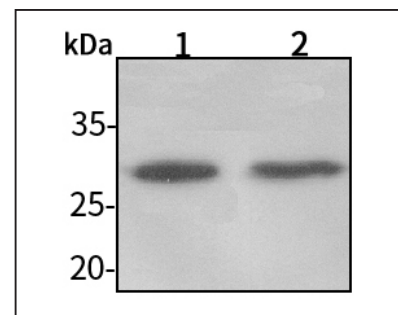
For Research Use Only. Not For Use In Diagnostic Procedures

Product Images



Western blot-Anti-Ral A pAb

Lane 1: Human HeLa cell lysate 30µg
 Lane 2: Human MCF-7 cell lysate 30µg
 Lane 3: Human HEK-293 cell lysate 30µg
 Separation gel: 13% polyacrylamide
 Electrophoresis: 100V, 4°C, 3h
 Transmembrane: 100V, 4°C, 1h
 Blocking: 5% w/v nonfat dry milk, 1× TBST, at RT with gentle shaking
 Primary antibody: 1:1000 in blocking buffer, 4°C, overnight
 Visualization: ECL, 30s-2min



Western blot-Anti-Ral A pAb

Lane 1: Mouse heart tissue lysate 30µg
 Lane 2: Rat stomach tissue lysate 30µg
 Separation gel: 13% polyacrylamide
 Electrophoresis: 100V, 4°C, 3h
 Transmembrane: 100V, 4°C, 1h
 Blocking: 5% w/v nonfat dry milk, 1× TBST, at RT with gentle shaking
 Primary antibody: 1:1000 in blocking buffer, 4°C, overnight
 Visualization: ECL, 30s-2min