

Anti-Prolactin Rabbit pAb



WL00933

For Research Use Only. Not For Use In Diagnostic Procedures

Product Information

Product name	Anti-Prolactin Rabbit pAb		
Source	Rabbit		
Species reactivity	Human, Mouse, Rat		
Tested applications	Western blot	1:1000-1:2000	
	Immunohistochemistry	1:200-1:600	
Cellular localization	Secreted.		
Pack size	50/100/200/500/1000μl		
Storage	Store at -20°C. Avoid freeze/thaw cycles.		
Storage buffer	Supplied in 20 mM phosphate (pH 7.5), 150 mM NaCl, 100 μg/ml		
	BSA, 50% glycerol and less than 0.02% sodium azide		

General Information

Background	Prolactin (PRL) is a neuroendocrine pituitary hormone. Prolactin, plays a role in multiple processes, including cell growth, reproduction and immune function. Full length Prolactin, as well as an alternative splice product lacking the third exon, are secreted by endothelial cells involved in angiogenesis. Additionally, Prolactin treatment of human PBMC has been shown to enhance IFN-gamma production. Prolactin has also been shown to enhance the proliferation of B cell hybridomas, leading to an overall increase in antibody production.
Immunogen	Polyclonal antibody is produced by immunizing animals with a synthetic peptide of Prolactin.
Purification	Polyclonal antibody was purified by Protein A affinity chromatography.

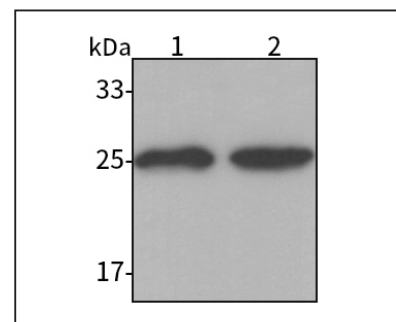
Anti-Prolactin Rabbit pAb



WL00933

For Research Use Only. Not For Use In Diagnostic Procedures

Product Images



Western blot-Anti-Prolactin pAb

Lane 1: Mouse pituitary gland tissue lysate

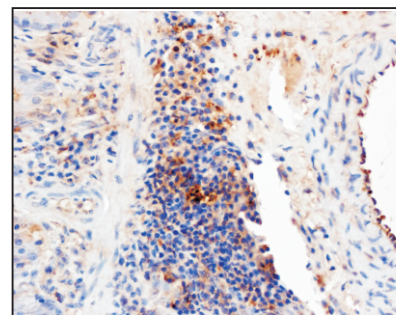
Lane 2: Rat pituitary gland tissue lysate

All lanes: Anti-Prolactin at 1:1000 dilution

Lysates/proteins at 20-50 μg per lane.

Predicted band size: 25 kDa

Observed band size: 25 kDa



Immunohistochemistry-Anti-Prolactin pAb

Sample: Mouse lung (LPS treated) tissue

Antigen retrieval: pH 9.0 Tris-EDTA buffer

Primary antibody: 1:400, 4°C, overnight

Secondary antibody-Biotin: 1:150, 37°C, 1h

Streptavidin-HRP: 1:200, 37°C, 30min

Color Developing: DAB