

Anti-NeuroD1 Rabbit pAb



WL02498

For Research Use Only. Not For Use In Diagnostic Procedures

Product Information

Product name	Anti-NeuroD1 Rabbit pAb		
Source	Rabbit		
Species reactivity	Human, Mouse, Rat		
Tested applications	WB	1:500-1:1000	
	IHC	1:400	
Cellular localization	Cytoplasm. Nucleus		
Pack size	50/100/200/500/1000μl		
Storage	Store at -20°C. Avoid freeze/thaw cycles.		
Storage buffer	Supplied in 20 mM phosphate (pH 7.5), 150 mM NaCl, 100 μg/ml		
	BSA, 50% glycerol and less than 0.02% sodium azide		

General Information

Background	NeuroD is a member of the basic helix-loop-helix (bHLH) family of transcription factors. Acts as a transcriptional activator: mediates transcriptional activation by binding to E box-containing promoter consensus core sequences 5'-CANNTG-3'. NeuroD is also phosphorylated at Ser274 though the results are context dependent as phosphorylation by Erk stimulates NeuroD activity in pancreatic β-cells while phosphorylation by GSK-3β inhibits NeuroD in neurons. Also required for dendrite morphogenesis and maintenance in the cerebellar cortex. Associates with chromatin to enhancer regulatory elements in genes encoding key transcriptional regulators of neurogenesis.
Immunogen	Polyclonal antibody is produced by immunizing animals with a synthetic peptide of NeuroD1.
Purification	Polyclonal antibody was purified by immunogen affinity chromatography.

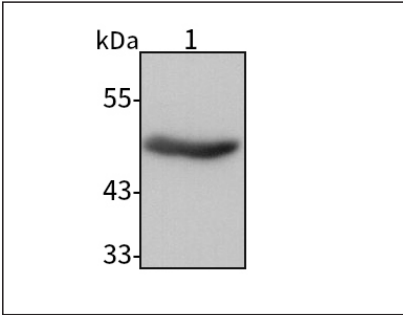
Anti-NeuroD1 Rabbit pAb



WL02498

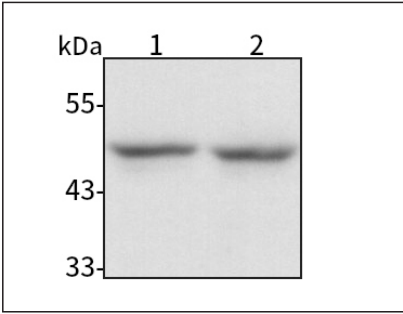
For Research Use Only. Not For Use In Diagnostic Procedures

Product Images



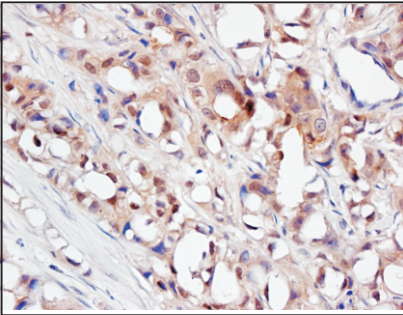
Western blot-Anti-NeuroD1 pAb

Lane 1: Human BxPC-3 cell lysate  
All lanes: Anti-NeuroD1 at 1:1000 dilution  
Lysates/proteins at 20-50 μg per lane.  
Predicted band size: 40 kDa  
Observed band size: 49 kDa



Western blot-Anti-NeuroD1 pAb

Lane 1: Mouse pancreas tissue lysate  
Lane 2: Rat pancreas tissue lysate  
All lanes: Anti-NeuroD1 at 1:1000 dilution  
Lysates/proteins at 20-50 μg per lane.  
Predicted band size: 40 kDa  
Observed band size: 49 kDa



Immunohistochemistry-Anti-NeuroD1 pAb

Immunohistochemical analysis of paraffin-embedded human breast cancer using anti-NeuroD1 Rabbit Antibody at 1:200 dilution. Perform heat mediated antigen retrieval with Tris-EDTA buffer pH 9.0