

Anti-PML Protein Rabbit pAb



WL02920

For Research Use Only. Not For Use In Diagnostic Procedures

Product Information

Product name	Anti-PML Protein Rabbit pAb	
Source	Rabbit	
Species reactivity	Human, Mouse, Rat	
Tested applications	WB	1:500-1:1000
	IHC	1:200
Cellular localization	Nucleus . Cytoplasm. Endoplasmic reticulum membrane.	
	Early endosome membrane	
Pack size	50/100/200/500/1000μl	
Storage	Store at -20°C. Avoid freeze/thaw cycles.	
Storage buffer	Supplied in 20 mM phosphate (pH 7.5), 150 mM NaCl, 100 μg/ml	
	BSA, 50% glycerol and less than 0.02% sodium azide	

General Information

Background

The PML protein is a zinc finger transcription factor expressed as three major transcription products due to alternative splicing. Its expression is cell-cycle related and it regulates the p53 response to oncogenic signals. The gene is often involved in the translocation with the retinoic acid receptor alpha gene associated with acute promyelocytic leukemia (APL). Extensive alternative splicing of this gene results in several variations of the protein's central and C-terminal regions; all variants encode the same N-terminus. Alternatively spliced transcript variants encoding different isoforms have been identified.

Immunogen

Polyclonal antibody is produced by immunizing animals with a synthetic peptide of PML Protein.

Purification

Polyclonal antibody was purified by immunogen affinity chromatography.

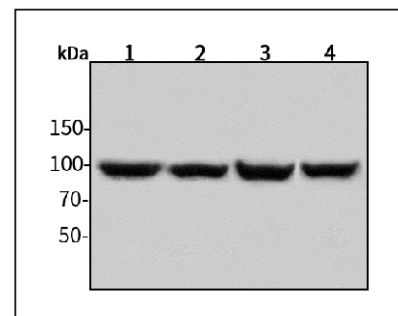
Anti-PML Protein Rabbit pAb



WL02920

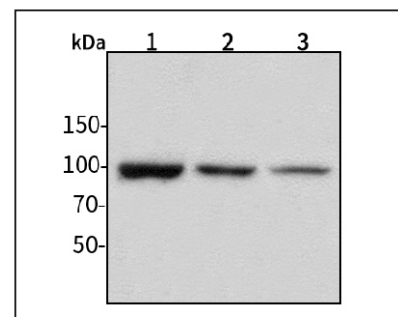
For Research Use Only. Not For Use In Diagnostic Procedures

Product Images



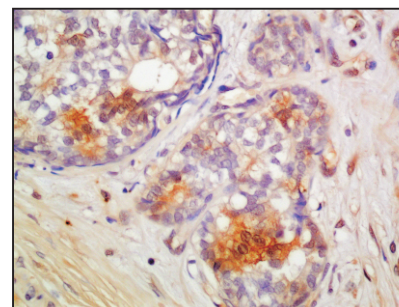
Western blot-Anti-PML Protein pAb

Lane 1: Human HepG2 cell lysate
 Lane 2: Human Hela cell lysate
 Lane 3: Human BGC-823 cell lysate
 Lane 4: Human MGC-803 cell lysate
 All lanes: Anti-PML Protein at 1:1000 dilution
 Lysates/proteins at 20-50 μg per lane.
 Predicted band size: 98 kDa
 Observed band size: 98-110 kDa



Western blot-Anti-PML Protein pAb

Lane 1: Mouse brain tissue lysate
 Lane 2: Rat lung tissue lysate
 Lane 3: Rat stomach tissue lysate
 All lanes: Anti-PML Protein at 1:1000 dilution
 Lysates/proteins at 20-50 μg per lane.
 Predicted band size: 98 kDa
 Observed band size: 98-110 kDa



Immunohistochemistry-Anti-PML Protein pAb

Immunohistochemical analysis of paraffin-embedded human breast cancer using anti-PML Protein Rabbit Antibody at 1:200 dilution. Perform heat mediated antigen retrieval with Tris-EDTA buffer pH 9.0