

Anti-Neurotensin Rabbit pAb



WL04510

For Research Use Only. Not For Use In Diagnostic Procedures

Product Information

Product name	Anti-Neurotensin Rabbit pAb	
Source	Rabbit	
Species reactivity	Human, Mouse, Rat	
Tested applications	WB	1:500-1:1000
	IF	1:200
Cellular localization	Secreted. Cytoplasmic vesicle.	
Pack size	50/100/200/500/1000μl	
Storage	Store at -20°C. Avoid freeze/thaw cycles.	
Storage buffer	Supplied in 20 mM phosphate (pH 7.5), 150 mM NaCl, 100 μg/ml	
	BSA, 50% glycerol and less than 0.02% sodium azide	

General Information

Background	Neurotensin is a secreted tridecapeptide, which is widely distributed throughout the central nervous system, and may function as a neurotransmitter or a neuromodulator. The Neurotensin precursor is processed in the central nervous system and in the intestine to generate the 13 amino acid processed Neurotensin peptide. While the processed Neurotensin peptide functions as a neurotransmitter to modulate dopaminergic signaling pathways in the brain, it acts as a parahormone that may contribute to the growth of human colon cancers in the gut.
Immunogen	Polyclonal antibody is produced by immunizing animals with a synthetic peptide of Neurotensin.
Purification	Polyclonal antibody was purified by immunogen affinity chromatography.

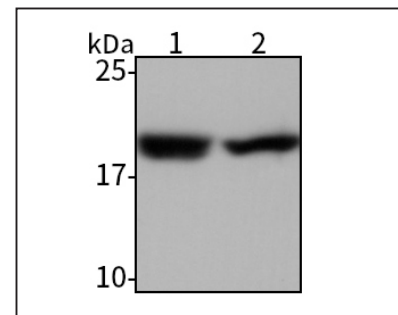
Anti-Neurotensin Rabbit pAb



WL04510

For Research Use Only. Not For Use In Diagnostic Procedures

Product Images



Western blot-Anti-Neurotensin pAb

Lane 1: Human SW480 cell lysate

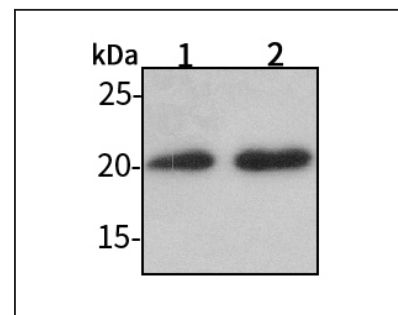
Lane 2: Human MGC803 cell lysate

All lanes: Anti-Neurotensin at 1:1000 dilution

Lysates/proteins at 20-50 μg per lane

Predicted band size: 20 kDa

Observed band size: 20 kDa



Western blot-Anti-Neurotensin pAb

Lane 1: Mouse colon tissue lysate

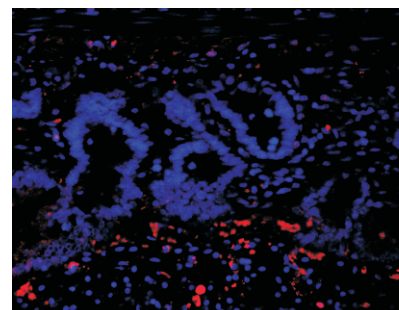
Lane 2: Rat stomach tissue lysate

All lanes: Anti-Neurotensin at 1:1000 dilution

Lysates/proteins at 20-50 μg per lane

Predicted band size: 20 kDa

Observed band size: 20 kDa



Immunofluorescence-Anti-Neurotensin pAb

Immunofluorescence analysis of paraffin-embedded rat intestine using anti-Neurotensin Rabbit Antibody at 1:200 dilution.

Perform heat mediated antigen retrieval with Tris-EDTA buffer pH 9.0