

Anti-Myoglobin Rabbit pAb



WL01132

For Research Use Only. Not For Use In Diagnostic Procedures

Product Information

Product name	Anti-Myoglobin Rabbit pAb	
Source	Rabbit	
Species reactivity	Mouse, Rat	
Tested applications	WB	1:1000-1:2000
	IHC	1:500
	IF	1:500
Cellular localization	Cytoplasm	
Pack size	50/100/200/500/1000μl	
Storage	Store at -20°C. Avoid freeze/thaw cycles.	
Storage buffer	Supplied in 20 mM phosphate (pH 7.5), 150 mM NaCl, 100 μg/ml	
	BSA, 50% glycerol and less than 0.02% sodium azide	

General Information

Background	Myoglobin is an iron- and oxygen-binding protein found in the muscle tissue of vertebrates in general and in almost all mammals. It is related to hemoglobin, which is the iron- and oxygen-binding protein in blood, specifically in the red blood cells. Myoglobin is only found in the bloodstream after muscle injury. It is an abnormal finding, and can be diagnostically relevant when found in blood. Diving mammals such as whales and seals have muscles with particularly high abundance of myoglobin. Myoglobin is found in Type I muscle, Type II A and Type II B, but most texts consider myoglobin not to be found in smooth muscle.
Immunogen	Polyclonal antibody is produced by immunizing animals with a synthetic peptide of Myoglobin.
Purification	Polyclonal antibody was purified by protein A affinity chromatography.

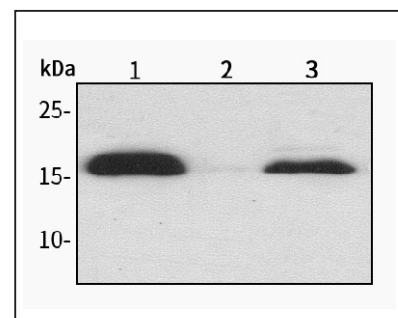
Anti-Myoglobin Rabbit pAb



WL01132

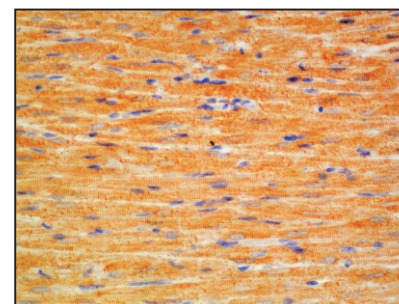
For Research Use Only. Not For Use In Diagnostic Procedures

Product Images



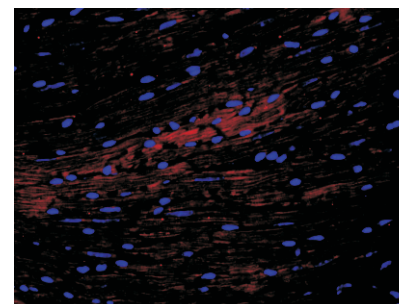
Western blot-Anti-Myoglobin pAb

Lane 1: Mouse heart tissue lysate
Lane 2: Mouse bone tissue lysate
Lane 3: Mouse muscle tissue lysate
All lanes: Anti-Myoglobin at 1:1000 dilution
 Lysates/proteins at 20-50 μg per lane.
 Predicted band size: 17 kDa
 Observed band size: 17 kDa



Immunohistochemistry-Anti-Myoglobin pAb

Immunohistochemical analysis of paraffin-embedded rat heart using anti-Myoglobin Rabbit Antibody at 1:500 dilution.
 Perform heat mediated antigen retrieval with Tris-EDTA buffer pH 9.0



Immunofluorescence-Anti-Myoglobin pAb

Immunofluorescence analysis of paraffin-embedded rat kidney using anti-Myoglobin Rabbit Antibody at 1:500 dilution.
 Perform heat mediated antigen retrieval with Tris-EDTA buffer pH 9.0