

Anti-Glut2 Rabbit pAb



WL03363

For Research Use Only. Not For Use In Diagnostic Procedures

Product Information

Product name	Anti-Glut2 Rabbit pAb	
Source	Rabbit	
Species reactivity	Human, Mouse, Rat	
Tested applications	WB	1:1000-1:2000
	IHC	1:100-1:400
Cellular localization	Membrane	
Pack size	50/100/200/500/1000μl	
Storage	Store at -20°C. Avoid freeze/thaw cycles.	
Storage buffer	Supplied in 20 mM phosphate (pH 7.5), 150 mM NaCl, 100 μg/ml	
	BSA, 50% glycerol and less than 0.02% sodium azide	

General Information

Background	Glucose is fundamental to the metabolism of mammalian cells. Its passage across cell membranes is mediated by a family of transporters termed glucose transporters or Gluts. Glut1, Glut3 and Glut4 are high-affinity transporters, whereas Glut2 is a low-affinity transporter. The ubiquitously expressed glucose transporter Glut1 is constitutively targeted to the plasma membrane and shows a much less dramatic translocation in response to insulin. Glut2 expression is seen in pancreatic beta cells, hepatocytes and basolateral membranes of intestinal and epithelial cells, while the highest expression of Glut3 has been found in neuronal tissue.
Immunogen	Polyclonal antibody is produced by immunizing animals with a synthetic peptide of Glut2.
Purification	Polyclonal antibody was purified by Protein A affinity chromatography.

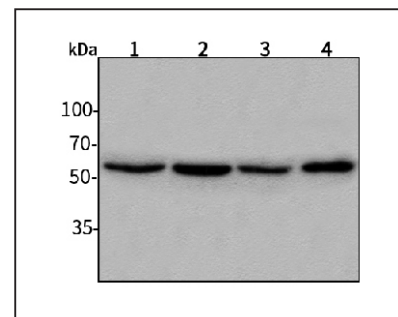
Anti-Glut2 Rabbit pAb



WL03363

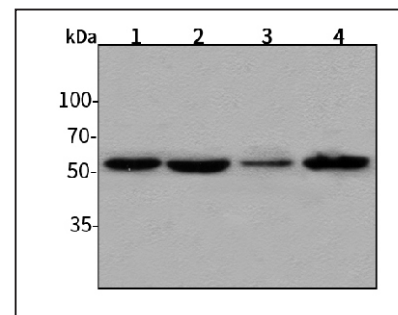
For Research Use Only. Not For Use In Diagnostic Procedures

Product Images



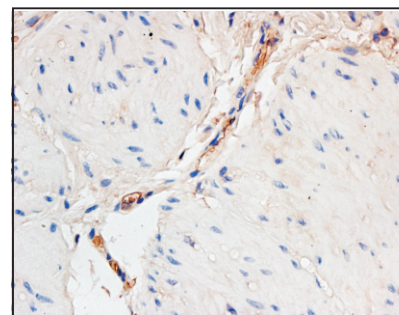
Western blot-Anti-Glut2 pAb

Lane 1: Human HepG2 cell lysate
 Lane 2: Human BGC-823 cell lysate
 Lane 3: Human MGC-803 cell lysate
 Lane 4: Human SGC-7901 cell lysate
 All lanes: Anti-Glut2 at 1:1000 dilution
 Lysates/proteins at 20-50 μg per lane.
 Predicted band size: 57 kDa
 Observed band size: 57 kDa



Western blot-Anti-Glut2 pAb

Lane 1: Mouse heart tissue lysate
 Lane 2: Mouse liver tissue lysate
 Lane 3: Rat lung tissue lysate
 Lane 4: Rat spleen tissue lysate
 All lanes: Anti-Glut2 at 1:1000 dilution
 Lysates/proteins at 20-50 μg per lane.
 Predicted band size: 57 kDa
 Observed band size: 57 kDa



Immunohistochemistry-Anti-Glut2 pAb

Immunohistochemical analysis of paraffin-embedded human colon cancer using anti-Glut2 Rabbit Antibody at 1:250 dilution.
 Perform heat mediated antigen retrieval with Tris-EDTA buffer pH 9.0

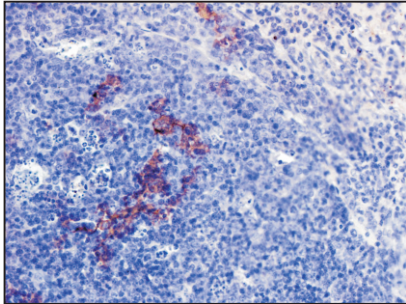
Anti-Glut2 Rabbit pAb



WL03363

For Research Use Only. Not For Use In Diagnostic Procedures

Product Images



Immunohistochemistry-Anti-Glut2 pAb

Immunohistochemical analysis of paraffin-embedded rat spleen using anti-Glut2 Rabbit Antibody at 1:250 dilution.

Perform heat mediated antigen retrieval with Tris-EDTA buffer pH 9.0