

Anti- Annexin-6/ANXA6 Rabbit pAb



WLA0484

For Research Use Only. Not For Use In Diagnostic Procedures

Product Information

Product name Anti- Annexin-6/ANXA6 Rabbit pAb**Source** Rabbit**Species reactivity** Human, Mouse, Rat

Tested applications

WB	1:500-1:1000
IHC, IF	1:50-1:200

Cellular localization Cytoplasm. Melanosome.**Pack size** 50/100/200/500/1000µl**Storage** Store at -20°C. **Avoid freeze/thaw cycles.**

Storage buffer

Supplied in 20 mM phosphate (pH 7.5), 150 mM NaCl, 100 µg/ml BSA, 50% glycerol and less than 0.02% sodium azide

General Information

Background

AnxA6, Also known as CBP68, it belongs to the family of calcium dependent membrane and phospholipid binding proteins. Several members of the membrane associated protein family are involved in membrane related events along the extracellular cytotoxicity and endocytosis pathways. Membrane associated protein VI is involved in mediating the aggregation of endosomes and vesicle fusion during endocytosis, and is secreted by epithelial bacteria. It can be associated with CD21 and also regulate the release of Ca (2+) from intracellular storage.

Immunogen

Polyclonal antibody is produced by immunizing animals with a synthetic peptide of Annexin-6/ANXA6.

Purification

Polyclonal antibody was purified by immunogen affinity chromatography.

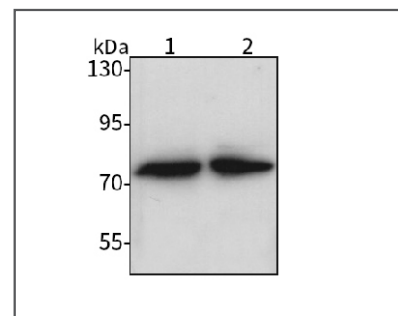
Anti- Annexin-6/ANXA6 Rabbit pAb



WLA0484

For Research Use Only. Not For Use In Diagnostic Procedures

Product Images



Western blot-Anti- Annexin-6/ANXA6 pAb

Lane 1: Human Hela cell lysate

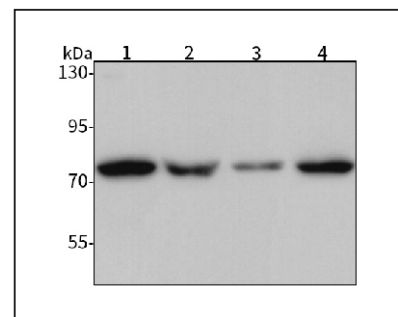
Lane 2: Human CAL-27 cell lysate

All lanes: Anti- Annexin-6/ANXA6 at 1:1000 dilution

Lysates/proteins at 20-50 µg per lane.

Predicted band size: 76 kDa

Observed band size: 76 kDa



Western blot-Anti- Annexin-6/ANXA6 pAb

Lane 1: Mouse lung tissue lysate

Lane 2: Mouse liver tissue lysate

Lane 3: Rat colon tissue lysate

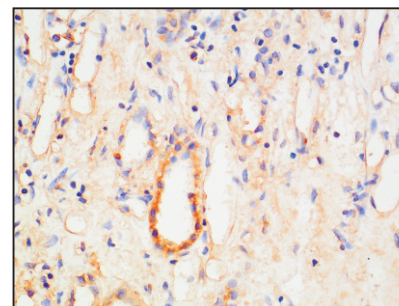
Lane 4: Rat liver tissue lysate

All lanes: Anti- Annexin-6/ANXA6 at 1:1000 dilution

Lysates/proteins at 20-50 µg per lane.

Predicted band size: 76 kDa

Observed band size: 76 kDa



Immunohistochemistry-Anti- Annexin-6/ANXA6 pAb

Immunohistochemical analysis of paraffin-embedded human renal clear cell carcinoma using anti- Annexin-6/ANXA6 Rabbit Antibody at 1:100 dilution.

Perform heat mediated antigen retrieval with Tris-EDTA buffer pH 9.0

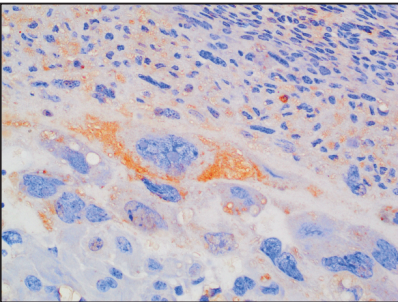
Anti- Annexin-6/ANXA6 Rabbit pAb



WLA0484

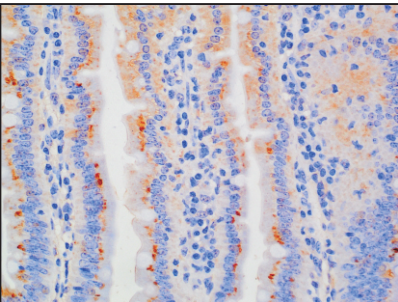
For Research Use Only. Not For Use In Diagnostic Procedures

Product Information



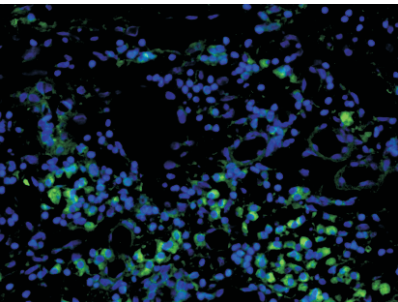
Immunohistochemistry-Anti- Annexin-6/ANXA6 pAb

Immunohistochemical analysis of paraffin-embedded mouse placenta using anti- Annexin-6/ANXA6 Rabbit Antibody at 1:100 dilution. Perform heat mediated antigen retrieval with Tris-EDTA buffer pH 9.0



Immunohistochemistry-Anti- Annexin-6/ANXA6 pAb

Immunohistochemical analysis of paraffin-embedded mouse small intestine using anti- Annexin-6/ANXA6 Rabbit Antibody at 1:100 dilution. Perform heat mediated antigen retrieval with Tris-EDTA buffer pH 9.0



Immunofluorescence-Anti- Annexin-6/ANXA6 pAb

Immunofluorescence analysis of paraffin-embedded human renal clear cell carcinoma using anti- Annexin-6/ANXA6 Rabbit Antibody at 1:100 dilution. Perform heat mediated antigen retrieval with Tris-EDTA buffer pH 9.0

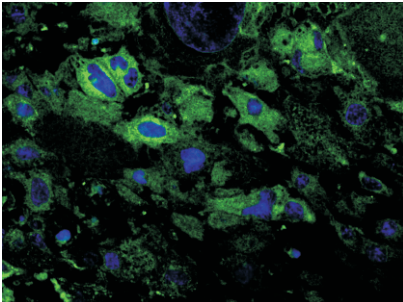
Anti- Annexin-6/ANXA6 Rabbit pAb



WLA0484

For Research Use Only. Not For Use In Diagnostic Procedures

Product Information



Immunofluorescence-Anti- Annexin-6/ANXA6 pAb

Immunofluorescence analysis of paraffin-embedded rat placenta using anti- Annexin-6/ANXA6 Rabbit Antibody at 1:100 dilution. Perform heat mediated antigen retrieval with Tris-EDTA buffer pH 9.0