

Anti- Peripherin Rabbit pAb



WL04389

For Research Use Only. Not For Use In Diagnostic Procedures

Product Information

Product name	Anti- Peripherin Rabbit pAb	
Source	Rabbit	
Species reactivity	Human, Mouse, Rat	
Tested applications	Western blot	1:500-1:1000
Molecular Wt.	57 kDa	
Pack size	50/100/200/500/1000μl	
Storage	Store at -20°C. Avoid freeze/thaw cycles.	
Storage buffer	Supplied in 20 mM phosphate (pH 7.5), 150 mM NaCl, 100 μg/ml BSA, 50% glycerol and less than 0.02% sodium azide	

General Information

Background	Peripherin is a neuron-specific intermediate filament protein that is particularly expressed in peripheral nervous system. LIF activates Peripherin by inducing members of Stat transcription factor family to bind to a specific promoter element in the Peripherin gene. IL-6 is also known to induce Peripherin expression. Although it is not essential for neurite formation, Peripherin is necessary for cellular intermediate filament network formation.
-------------------	--

Immunogen	Polyclonal antibody is produced by immunizing animals with a synthetic peptide of Peripherin.
------------------	---

Purification	Polyclonal antibody was purified by immunogen affinity chromatography.
---------------------	--

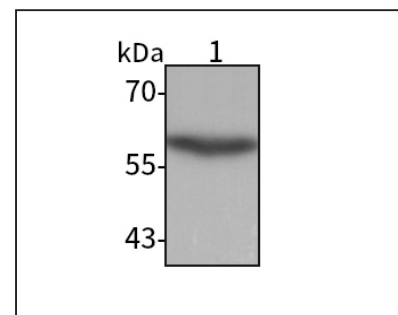
Anti- Peripherin Rabbit pAb



WL04389

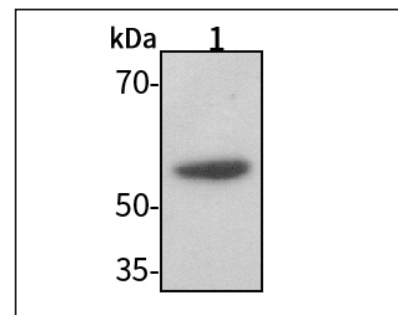
For Research Use Only. Not For Use In Diagnostic Procedures

Product Images



Western blot-Anti-Peripherin pAb

Lane 1: Human SH-SY5Y cell lysate 30μg
 Separation gel: 8% polyacrylamide
 Electrophoresis: 100V, 4°C, 3h
 Transmembrane: 100V, 4°C, 1h
 Blocking: 5% w/v nonfat dry milk, 1 × TBST, at RT with gentle shaking
 Primary antibody: 1:1000 in blocking buffer, 4°C, overnight
 Secondary antibody (WLA023a) : 1:5000-1:10000, 45min
 Detection: ECL, 30s-2min



Western blot-Anti-Peripherin pAb

Lane 1: Mouse colon tissue lysate 30μg
 Separation gel: 8% polyacrylamide
 Electrophoresis: 100V, 4°C, 3h
 Transmembrane: 100V, 4°C, 1h
 Blocking: 5% w/v nonfat dry milk, 1 × TBST, at RT with gentle shaking
 Primary antibody: 1:1000 in blocking buffer, 4°C, overnight
 Secondary antibody (WLA023a) : 1:5000-1:10000, 45min
 Detection: ECL, 30s-2min