

Anti-KIF5B Rabbit pAb



WL04906

For Research Use Only. Not For Use In Diagnostic Procedures

Product Information

Product name	Anti-KIF5B Rabbit pAb		
Source	Rabbit		
Species reactivity	Human, Mouse, Rat		
Tested applications	WB	1:1000-1:2000	
Pack size	50/100/200/500/1000µl		
Storage	Store at -20°C. Avoid freeze/thaw cycles.		
Storage buffer	Supplied in 20 mM phosphate (pH 7.5), 150 mM NaCl, 100 µg/ml BSA, 50% glycerol and less than 0.02% sodium azide		

General Information

Background	The kinesin motor proteins include at least two forms of conventional kinesin encoded by different genes and designated as ubiquitous kinesin, which is expressed in all cells and tissues, or neuronal kinesin, which is expressed exclusively in neural cells. Kinesin is a microtubule associated protein comprised of three different structural domains. A considerable globular N-terminal domain regulates the hydrolysis of ATP and also microtubule binding while central coiled-coil domains promote heavy chain dimerization.
Immunogen	Polyclonal antibody is produced by immunizing animals with a synthetic peptide of KIF5B .
Purification	Polyclonal antibody was purified by Protein A affinity chromatography.

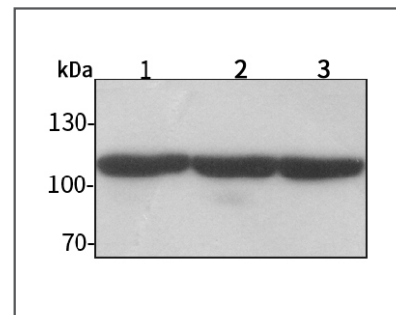
Anti-KIF5B Rabbit pAb



WL04906

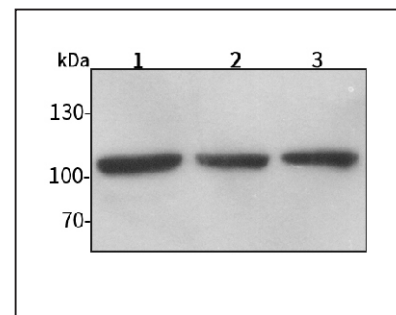
For Research Use Only. Not For Use In Diagnostic Procedures

Product Images



Western blot-Anti-KIF5B pAb

Lane 1: Human Hela cell lysate
 Lane 2: Human MCF-7 cell lysate
 Lane 3: Human HEK-293 cell lysate
 All lanes: Anti-KIF5B at 1:1000 dilution
 Lysates/proteins at 20-50 µg per lane.
 Predicted band size: 110 kDa
 Observed band size: 110-130 kDa



Western blot-Anti-KIF5B pAb

Lane 1: Mouse heart tissue lysate
 Lane 2: Rat brain tissue lysate
 Lane 3: Rat spinal cord tissue lysate
 All lanes: Anti-KIF5B at 1:1000 dilution
 Lysates/proteins at 20-50 µg per lane.
 Predicted band size: 110 kDa
 Observed band size: 110-130 kDa