

Anti-STAT6 Rabbit pAb



WL03233

For Research Use Only. Not For Use In Diagnostic Procedures

Product Information

Product name	Anti-STAT6 Rabbit pAb		
Source	Rabbit		
Species reactivity	Human, Rat, Mouse		
Tested applications	WB	1:500-1:1000	
	IHC	1:100-1:400	
	IF	1:200	
Cellular localization	Cytoplasm. Nucleus		
Pack size	50/100/200/500/1000µl		
Storage	Store at -20°C. Avoid freeze/thaw cycles.		
Storage buffer	Supplied in 20 mM phosphate (pH 7.5), 150 mM NaCl, 100 µg/ml		
	BSA, 50% glycerol and less than 0.02% sodium azide		

General Information

Background	The protein encoded by this gene is a member of the STAT family of transcription factors. In response to cytokines and growth factors, STAT family members are phosphorylated by the receptor associated kinases, and then form homo- or heterodimers that translocate to the cell nucleus where they act as transcription activators. Stat6 is activated via phosphorylation at Tyr641 and is required for responsiveness to IL-4 and IL-13. In addition, Stat6 is activated by IFN-α in B cells, where it forms transcriptionally active complexes with Stat2 and p48. Protein phosphatase 2A is also involved in regulation of IL-4-mediated Stat6 signaling.
Immunogen	Polyclonal antibody is produced by immunizing animals with a synthetic peptide of STAT6.
Purification	Polyclonal antibody was purified by immunogen affinity chromatography.

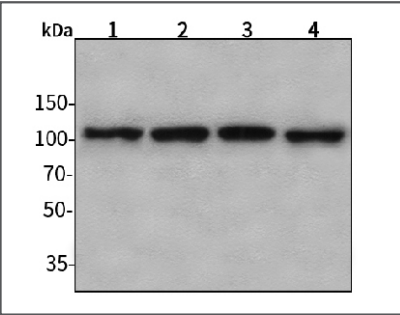
Anti-STAT6 Rabbit pAb



WL03233

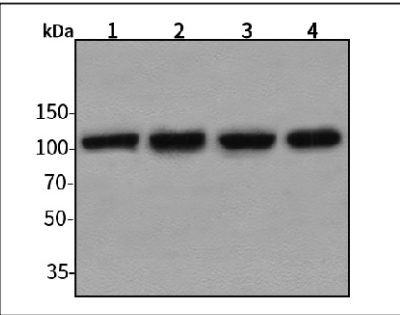
For Research Use Only. Not For Use In Diagnostic Procedures

Product Images



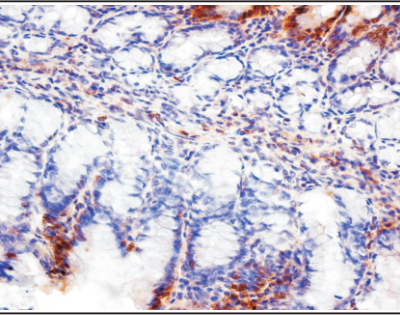
Western blot-Anti-STAT6 pAb

Lane 1: Human HepG2 cell lysate
Lane 2: Human Hela cell lysate
Lane 3: Human BGC-823 cell lysate
Lane 4: Human MGC-803 cell lysate
All lanes: Anti-STAT6 at 1:1000 dilution
Lysates/proteins at 20-50 µg per lane.
Predicted band size: 94 kDa
Observed band size: 100-110 kDa



Western blot-Anti-STAT6 pAb

Lane 1: Mouse kidney tissue lysate
Lane 2: Mouse heart tissue lysate
Lane 3: Rat lung tissue lysate
Lane 4: Rat stomach tissue lysate
All lanes: Anti-STAT6 at 1:1000 dilution
Lysates/proteins at 20-50 µg per lane.
Predicted band size: 94 kDa
Observed band size: 100-110 kDa



Immunohistochemistry-Anti-STAT6 pAb

Immunohistochemical analysis of paraffin-embedded rat colon using anti-STAT6 Rabbit Antibody at 1:150 dilution.
Perform heat mediated antigen retrieval with Tris-EDTA buffer pH 9.0

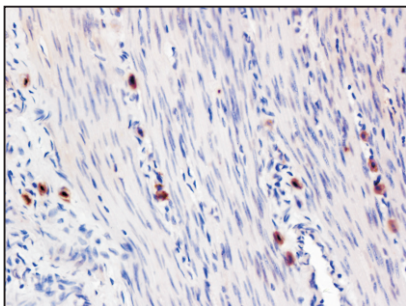
Anti-STAT6 Rabbit pAb



WL03233

For Research Use Only. Not For Use In Diagnostic Procedures

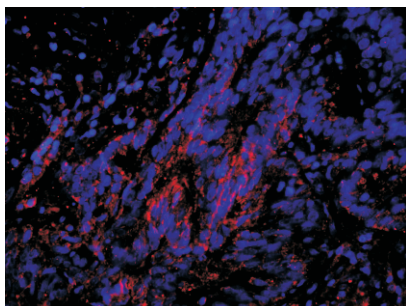
Product Images



Immunohistochemistry-Anti-STAT6 pAb

Immunohistochemical analysis of paraffin-embedded rat stomach using anti-STAT6 Rabbit Antibody at 1:150 dilution.

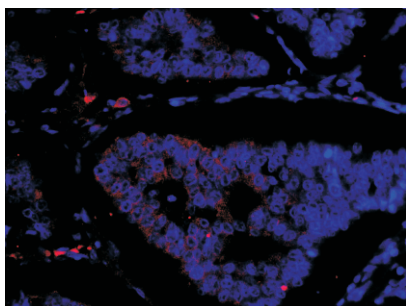
Perform heat mediated antigen retrieval with Tris-EDTA buffer pH 9.0



Immunofluorescence-Anti-STAT6 pAb

Immunofluorescence analysis of paraffin-embedded human colon cancer using anti-STAT6 Rabbit Antibody at 1:200 dilution.

Perform heat mediated antigen retrieval with Tris-EDTA buffer pH 9.0



Immunofluorescence-Anti-STAT6 pAb

Immunofluorescence analysis of paraffin-embedded human breast cancer using anti-STAT6 Rabbit Antibody at 1:200 dilution.

Perform heat mediated antigen retrieval with Tris-EDTA buffer pH 9.0