

## Anti-NHE-3 Rabbit pAb



WL00814

For Research Use Only. Not For Use In Diagnostic Procedures

## Product Information

<b>Product name</b>	Anti-NHE-3 Rabbit pAb	
<b>Source</b>	Rabbit	
<b>Species reactivity</b>	Human, Mouse, Rat	
<b>Tested applications</b>	WB	1:1000-1:2000
	IHC	1:100-1:400
	IF	1:100-1:400
<b>Cellular localization</b>	Membrane	
<b>Pack size</b>	50/100/200/500/1000μl	
<b>Storage</b>	Store at -20°C. <b>Avoid freeze/thaw cycles.</b>	
<b>Storage buffer</b>	Supplied in 20 mM phosphate (pH 7.5), 150 mM NaCl, 100 μg/ml	
	BSA, 50% glycerol and less than 0.02% sodium azide	

## General Information

<b>Background</b>	Na <sup>+</sup> /H <sup>+</sup> exchanger (NHE) family members are integral membrane proteins which play key role in catalyzing the extrusion of intracellular proton (H <sup>+</sup> ) ions in exchange for extracellular sodium (Na <sup>+</sup> ) ions for regulation of cellular pH as well as transepithelial ion/water transport. NHE-3 translocates to internal pools where it mediates natriuresis when blood pressure increases abruptly. NHE-3 is also expressed in the stomach and functions to protect the mucosa by secreting protons that diffuse into the mucous cells.
<b>Immunogen</b>	Polyclonal antibody is produced by immunizing animals with a synthetic peptide of NHE-3.
<b>Purification</b>	Polyclonal antibody was purified by Protein A affinity chromatography.

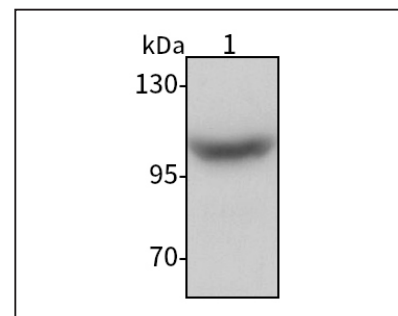
## Anti-NHE-3 Rabbit pAb



WL00814

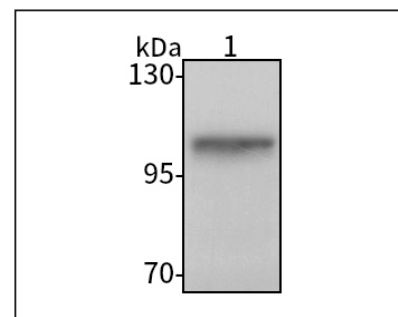
For Research Use Only. Not For Use In Diagnostic Procedures

## Product Images



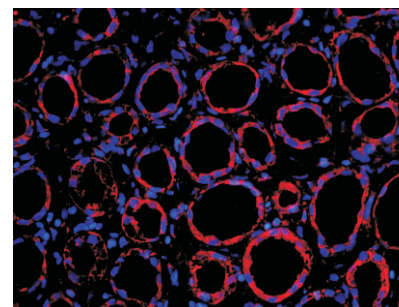
## Western blot-Anti-NHE-3 pAb

Lane 1: Human BGC-823 cell lysate  
 All lanes: Anti-NHE-3 at 1:1000 dilution  
 Lysates/proteins at 20-50 μg per lane.  
 Predicted band size: 93 kDa  
 Observed band size: 100 kDa



## Western blot-Anti-NHE-3 pAb

Lane 1: Mouse kidney tissue lysate  
 All lanes: Anti-NHE-3 at 1:1000 dilution  
 Lysates/proteins at 20-50 μg per lane.  
 Predicted band size: 93 kDa  
 Observed band size: 100 kDa



## Immunofluorescence-Anti-NHE-3 pAb

Immunofluorescence analysis of paraffin-embedded human kidney using anti-NHE-3 Rabbit Antibody at 1:200 dilution.  
 Perform heat mediated antigen retrieval with Tris-EDTA buffer pH 9.0

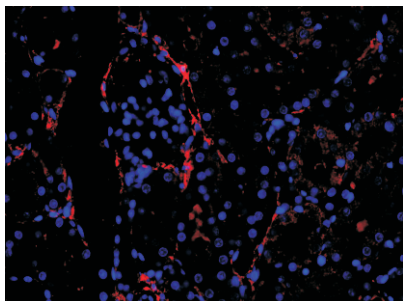
## Anti-NHE-3 Rabbit pAb



WL00814

For Research Use Only. Not For Use In Diagnostic Procedures

### Product Information



#### Immunofluorescence-Anti-NHE-3 pAb

Immunofluorescence analysis of paraffin-embedded rat kidney using anti-NHE-3 Rabbit Antibody at 1:200 dilution.

Perform heat mediated antigen retrieval with Tris-EDTA buffer pH 9.0