

## Anti-MyoD1 Rabbit pAb



WL04662

For Research Use Only. Not For Use In Diagnostic Procedures

## Product Information

<b>Product name</b>	Anti-MyoD1 Rabbit pAb	
<b>Source</b>	Rabbit	
<b>Species reactivity</b>	Human, Mouse, Rat	
<b>Tested applications</b>	WB	1:1000-1:2000
<b>Pack size</b>	50/100/200/500/1000µl	
<b>Storage</b>	Store at -20°C. <b>Avoid freeze/thaw cycles.</b>	
<b>Storage buffer</b>	Supplied in 20 mM phosphate (pH 7.5), 150 mM NaCl, 100 µg/ml BSA, 50% glycerol and less than 0.02% sodium azide	

## General Information

<b>Background</b>	MYOD1, also named as BHLHC1 or MYF3, is a 320 amino acid protein, which promotes the transcriptional activity of MYOD1 through its CDK9-mediated phosphorylation. That belongs to the basic helix-loop-helix family of transcription factors and the myogenic factors subfamily. It regulates muscle cell differentiation by inducing cell cycle arrest, a prerequisite for myogenic initiation
-------------------	---

<b>Immunogen</b>	Polyclonal antibody is produced by immunizing animals with a synthetic peptide of MyoD1.
------------------	--

<b>Purification</b>	Polyclonal antibody was purified by Protein A affinity chromatography.
---------------------	--

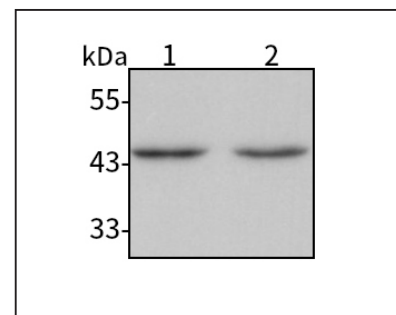
## Anti-MyoD1 Rabbit pAb



WL04662

For Research Use Only. Not For Use In Diagnostic Procedures

## Product Images



Western blot-Anti-MyoD1 pAb

Lane 1: Mouse heart tissue lysate

Lane 2: Rat heart tissue lysate

All lanes: Anti-MyoD1 at 1:1000 dilution

Lysates/proteins at 20-50 µg per lane.

Predicted band size: 35 kDa

Observed band size: 45 kDa