

Anti-PKC iota/PRKCI Rabbit pAb



WL00384

For Research Use Only. Not For Use In Diagnostic Procedures

Product Information

Product name	Anti-PKC iota/PRKCI Rabbit pAb	
Source	Rabbit	
Species reactivity	Human, Mouse, Rat	
Tested applications	WB	1:1000-1:2000
	IHC, IF	1:500

Cellular localization Cytoplasm. Membrane. Nucleus.

Pack size 50/100/200/500/1000µl

Storage Store at -20°C. **Avoid freeze/thaw cycles.**

Storage buffer Supplied in 20 mM phosphate (pH 7.5), 150 mM NaCl, 100 µg/ml BSA, 50% glycerol and less than 0.02% sodium azide

General Information

Background The atypical protein kinase C isoform PRKC iota (PRKCI) is a member of the protein kinase C (PKC) family of serine/threonine protein kinases. The PKC family consists of at least eight members that are differentially expressed and involved in various cellular processes. This protein kinase is calcium independent and phospholipid dependent. This kinase can be recruited to vesicular tubular clusters (VTCs) by directly interacting with the small GTPase RAB2, where the kinase phosphorylates 3-phosphoglycerate dehydrogenase (GAPD/GAPDH) and plays a role in microtubule dynamics of early secretion pathways. PRKC iota has been found to be necessary for BCL-ABL mediated resistance to drug-induced apoptosis, thus protecting leukemia cells from drug-induced apoptosis.

Immunogen Polyclonal antibody is produced by immunizing animals with a synthetic peptide of PKC iota/PRKCI.

Purification Polyclonal antibody was purified by Protein A affinity chromatography.

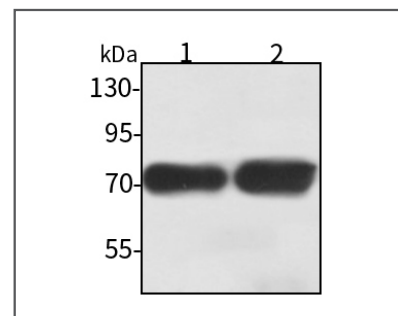
Anti-PKC iota/PRKCI Rabbit pAb



WL00384

For Research Use Only. Not For Use In Diagnostic Procedures

Product Images



Western blot-Anti-PKC iota/PRKCI pAb

Lane 1: Human HeLa cell lysate

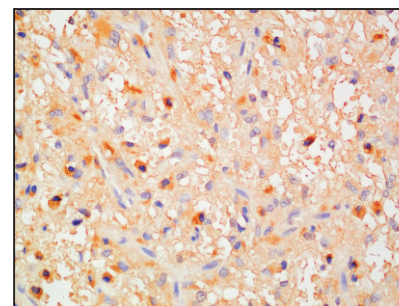
Lane 2: Human HEK293 cell lysate

All lanes: Anti-PKC iota/PRKCI at 1:1000 dilution

Lysates/proteins at 20-50 µg per lane

Predicted band size: 68 kDa

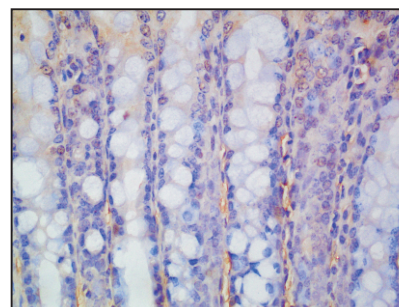
Observed band size: 68 kDa



Immunohistochemistry-Anti-PKC iota/PRKCI pAb

Immunohistochemical analysis of paraffin-embedded human glioma using anti-PKC iota/PRKCI Rabbit Antibody at 1:500 dilution.

Perform heat mediated antigen retrieval with Tris-EDTA buffer pH 9.0



Immunohistochemistry-Anti-PKC iota/PRKCI pAb

Immunohistochemical analysis of paraffin-embedded mouse intestine using anti-PKC iota/PRKCI Rabbit Antibody at 1:500 dilution.

Perform heat mediated antigen retrieval with Tris-EDTA buffer pH 9.0

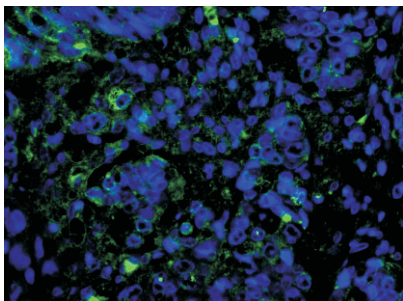
Anti-PKC iota/PRKCI Rabbit pAb



WL00384

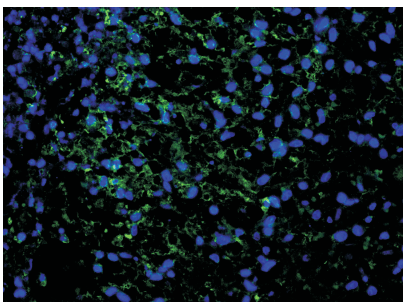
For Research Use Only. Not For Use In Diagnostic Procedures

Product Information



Immunofluorescence-Anti-PKC iota/PRKCI pAb

Immunofluorescence analysis of paraffin-embedded human colon cancer using anti-PKC iota/PRKCI Rabbit Antibody at 1:500 dilution.
Perform heat mediated antigen retrieval with Tris-EDTA buffer pH 9.0



Immunofluorescence-Anti-PKC iota/PRKCI pAb

Immunofluorescence analysis of paraffin-embedded human glioma using anti-PKC iota/PRKCI Rabbit Antibody at 1:500 dilution.
Perform heat mediated antigen retrieval with Tris-EDTA buffer pH 9.0