

Anti-TLR9 Rabbit pAb



WL02818

For Research Use Only. Not For Use In Diagnostic Procedures

Product Information

Product name	Anti-TLR9 Rabbit pAb		
Source	Rabbit		
Species reactivity	Human,Mouse,Rat		
Tested applications	WB	1:500-1:1000	
	IHC	1:100-1:400	
	IF	1:200	
Cellular localization	Endoplasmic reticulum membrane. Endosome. Lysosome.		
	Cytoplasmic vesicle		
Pack size	50/100/200/500/1000μl		
Storage	Store at -20°C. Avoid freeze/thaw cycles.		
Storage buffer	Supplied in 20 mM phosphate (pH 7.5), 150 mM NaCl, 100 μg/ml		
General Information	BSA, 50% glycerol and less than 0.02% sodium azide		

General Information

Background	The TLR family plays a fundamental role in pathogen recognition and activation of innate immunity. TLRs are named for the high degree of conservation in structure and function seen between mammalian TLRs and the Drosophila transmembrane protein Toll. TLR9 recognizes unmethylated CpG sequences in DNA molecules. TLR9 is expressed by numerous cells of the immune system such as B lymphocytes, monocytes, natural killer (NK) cells, and plasmacytoid dendritic cells. TLR9 is expressed intracellularly, within the endosomal compartments and functions to alert the immune system of viral and bacterial infections by binding to DNA rich in CpG motifs. TLR9 signals leads to activation of the cells initiating pro-inflammatory reactions that result in the production of cytokines such as type-I interferon and IL-12.
Immunogen	Polyclonal antibody is produced by immunizing animals with a synthetic peptide of TLR9.
Purification	Polyclonal antibody was purified by immunogen affinity chromatography.

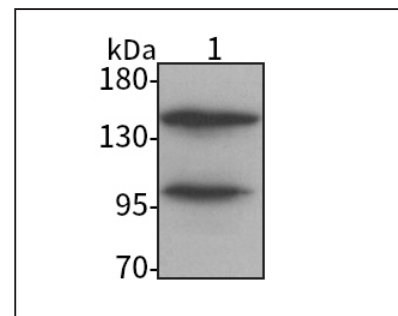
Anti-TLR9 Rabbit pAb



WL02818

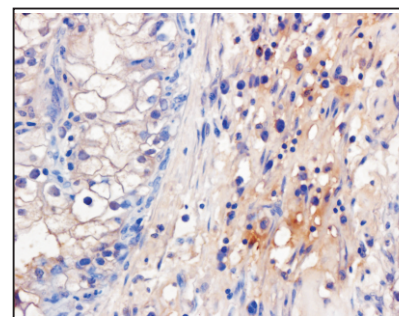
For Research Use Only. Not For Use In Diagnostic Procedures

Product Images



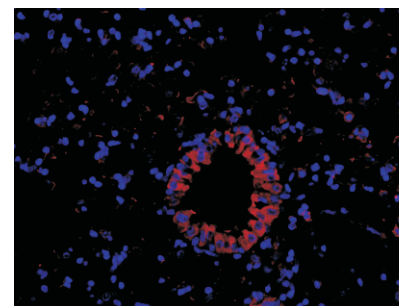
Western blot-Anti-TLR9 pAb

Lane 1: Mouse spleen tissue lysate
All lanes: Anti-TLR9 at 1:1000 dilution
 Lysates/proteins at 20-50 µg per lane.
 Predicted band size: 116 kDa.
 Observed band size: 116/140 kDa



Immunohistochemistry-Anti-TLR9 pAb

Immunohistochemical analysis of paraffin-embedded human stomach cancer using anti-TLR9 Rabbit Antibody at 1:150 dilution.
 Perform heat mediated antigen retrieval with Tris-EDTA buffer pH 9.0



Immunofluorescence-Anti-TLR9 pAb

Immunofluorescence analysis of paraffin-embedded mouse lung using anti-TLR9 Rabbit Antibody at 1:200 dilution.
 Perform heat mediated antigen retrieval with Tris-EDTA buffer pH 9.0

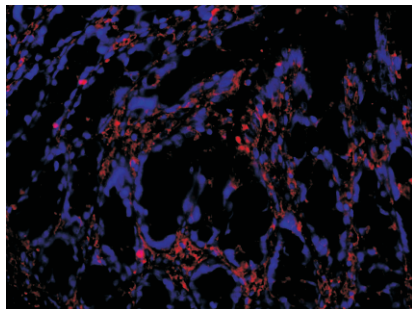
Anti-TLR9 Rabbit pAb



WL02818

For Research Use Only. Not For Use In Diagnostic Procedures

Product Information



Immunofluorescence-Anti-TLR9 pAb

Immunofluorescence analysis of paraffin-embedded rat colon using anti-TLR9 Rabbit Antibody at 1:200 dilution.

Perform heat mediated antigen retrieval with Tris-EDTA buffer pH 9.0